



IntrospeQt iCapture Desktop Installation Guide

About this document	2
About IntrospeQt iCapture Desktop.....	2
System Requirements	2
Installing iCapture Desktop	3
For Windows Vista Users Only	5

Document Version and Date	Product Version
v1.0 3.06.2009	v2.0

About this document

The purpose of this document is to outline how to install the IntrospeQt iCapture Desktop application on a client machine.

The user manual is a separate document available under “Help” section of the desktop application.

About IntrospeQt iCapture Desktop

IntrospeQt iCapture Desktop is an out-of-the-box desktop solution designed to simplify your document capture process, it effectively captures and rapidly digitizes paper based assets. It can be leveraged as a standalone document capture solution or act as a front-end capture solution for your existing document management application.

iCapture Desktop follows a comprehensive document capture workflow that can be easily configured to meet your specific business needs. From document source to storage, it offers options to handle ad-hoc to complex batch scan, manual to automatic sort and index, and simple to advanced search features. It is quick to install and easy to operate. With its configurable scanning profiles, documents can be scanned at source in color, black and white or grayscale and converted into digital formats such as BMP, PNG, JPG and TIF. Multiple scanning profiles can be set-up to handle varied capture requirements. To ensure optimal image output the resolution and size of the images can be predefined and even blank pages removed. Scanned images can be viewed, rotated, re-sized and cropped.

Document recognition modes such as document position, barcodes and patch codes can be used to automatically separate documents. Documents can be indexed with both simple and guided indexing. Indexed document images stored in the iCapture storage system can be easily searched, retrieved and even converted to PDF formats for circulation.

For more information on iCapture Product features logon to www.introspeqt.com

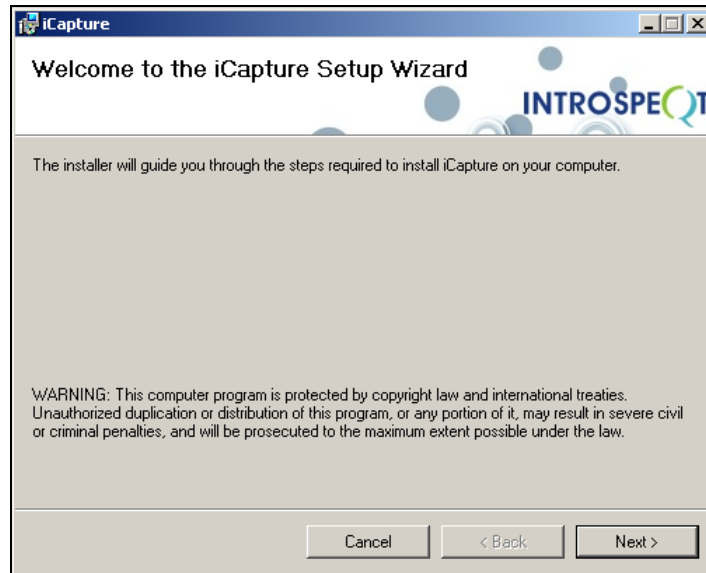
System Requirements

The system requirements to run the iCapture Desktop system:

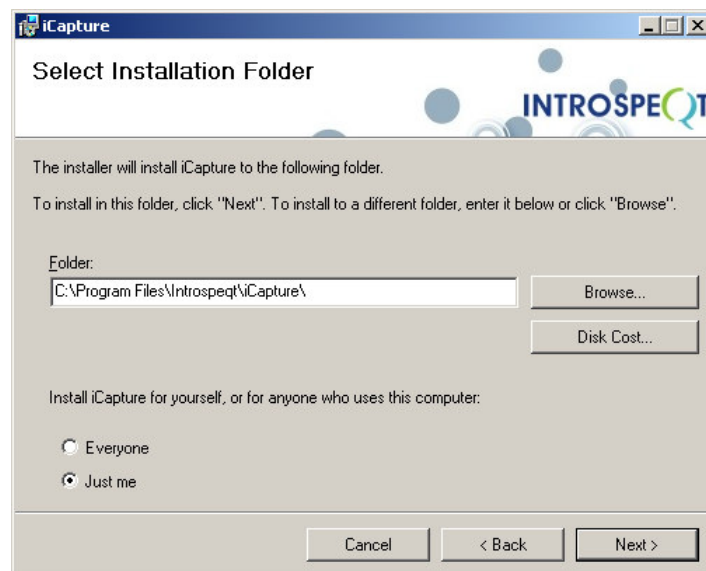
- 1) OS - Microsoft® Windows® 2000, 2003; Windows XP; Windows Vista®
- 2) Minimum 256MB of RAM
- 3) 1GB of available hard disk space (recommended)
- 4) Microsoft .Net Framework 2.0

Installing iCapture Desktop

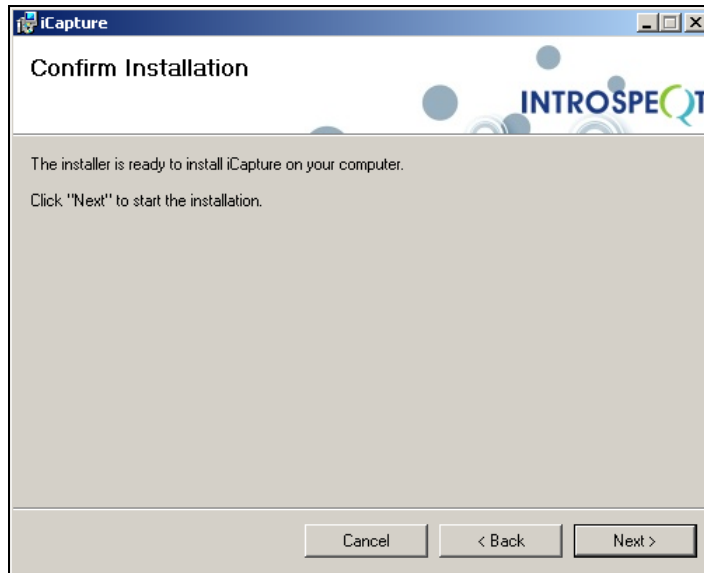
1. Unzip the downloaded file. You can use a GUI-based tool such as 7-zip.
2. Click on the exe file named **iCaptureDesktopSetup.msi** to launch the installation wizard.
3. In the installation wizard, click “Next” to initiate install



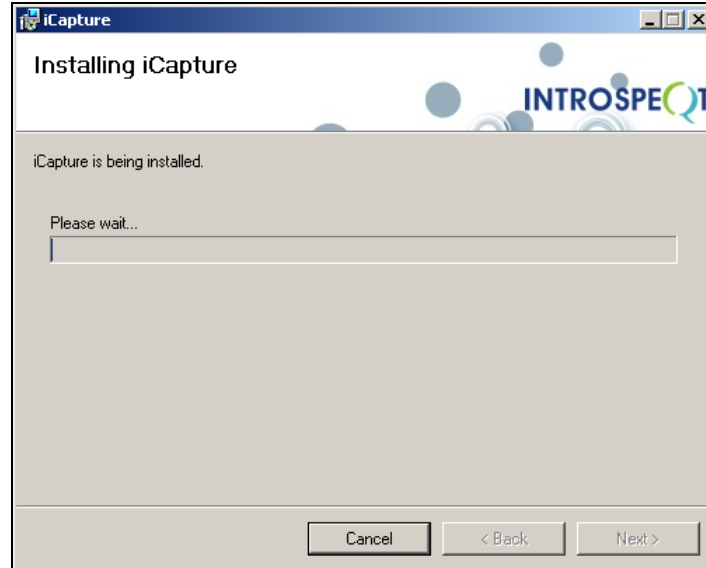
4. In the “Select Installation Folder” window specify a folder location using “Browse” to specify a folder, alternately use the default location (C:\Program Files\Introspeqt\iCapture). To check disk availability click “Disk Cost”, this will show current, required and available disk size. To ensure that the application is available to all users of the machine check “Everyone” option. Click “Next” to proceed.



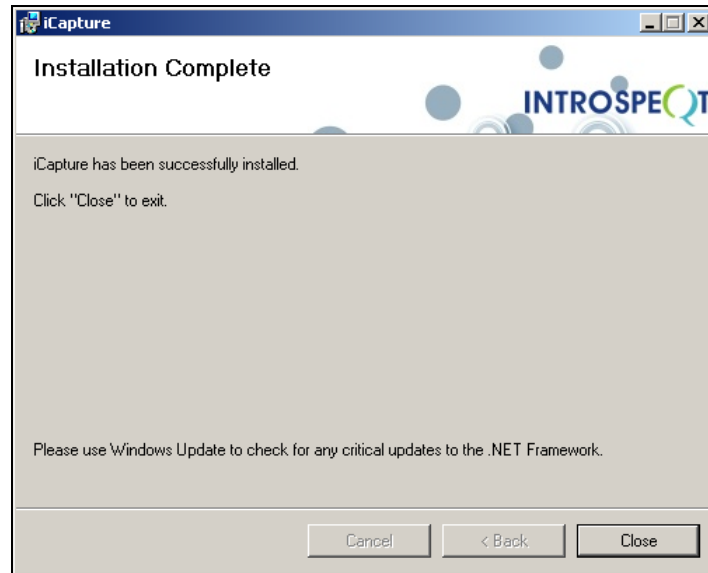
5. To confirm the installation, in the “Confirm Installation” window click “Next”



6. Once confirmed, the installation will commence and the status bar will display the installation status.



7. On completion of the installation click “Close” to exit.



iCapture Desktop will be installed in the specified folder location (whatever has been configured). Shortcuts of the three iCapture modules (**iConfig, iCapture and iSearch**) will be automatically created on the client desktop. Launch these modules by clicking on the relevant icons.

For Windows Vista Users Only

Windows Vista users need to configure security settings on the application folder to ensure it functions as required:

1. Navigate to C:\Program Files\Introspeqt or the location the application has been installed to.
2. Right click on folder titled “Introspeqt”
3. Select “Properties” listed in the right click menu
4. In “IntrospeQt Properties” window select the “Security” tab.
5. In the “Security” tab, select the Group or user name titled: “Users (username-PC\users)”.
6. Click on the “Edit” button
7. Under permission section tick the check box “Full Control” for the selected user
8. Click “Apply” to update the security setting

Note that this configuration is a **pre-requisite** for iCapture Desktop to function properly.