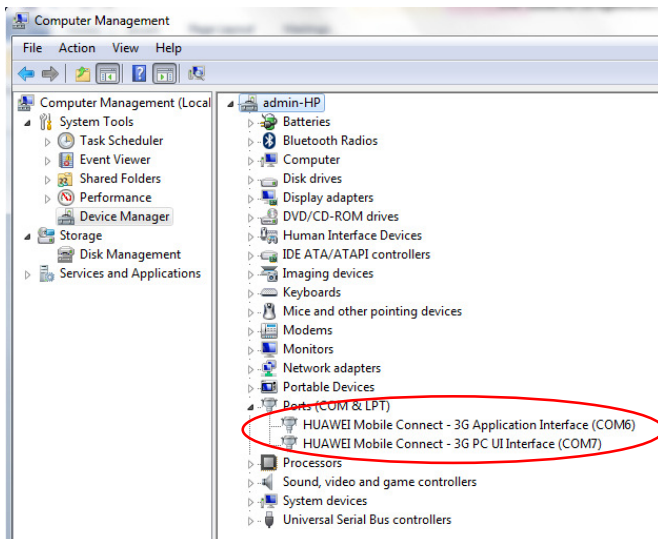


User Guide for MT4 SMS Sender Setup

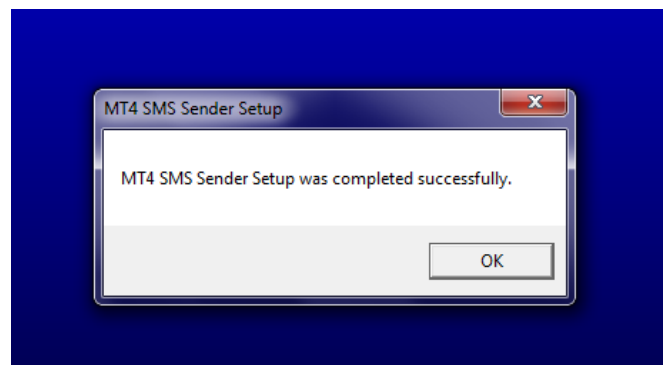
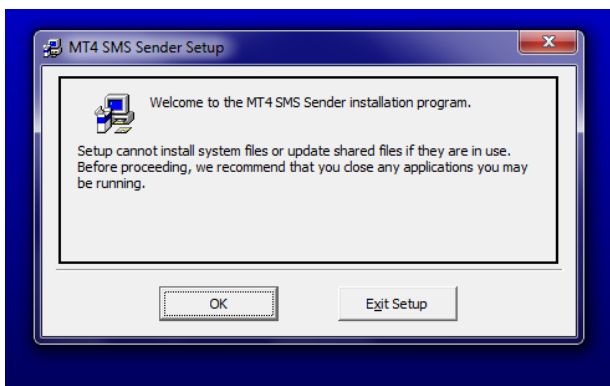
1. Install MT4 SMS Sender Application

1.0 Before you setup MT4 SMS Sender, you must install your Modem properly. Make sure your Modem comport appear on the Device Manger as picture below. You have to refer to your Modem user guide for modem installation setup.

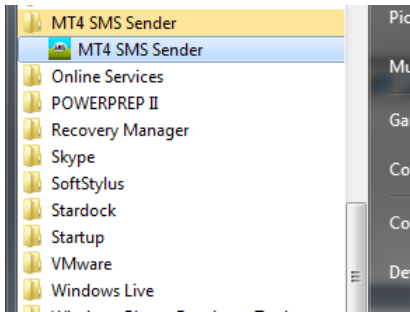


1.1 Launch the setup.exe and follow the instruction on the software.

Name	Size	Type	Date Modified
Support		File Folder	4/25/2011 5:51 PM
iPage.CAB	9,800 KB	Cabinet File	4/25/2011 5:51 PM
setup.exe	137 KB	Application	2/23/2004 12:00 AM
SETUP.LST	5 KB	LST File	4/25/2011 5:51 PM



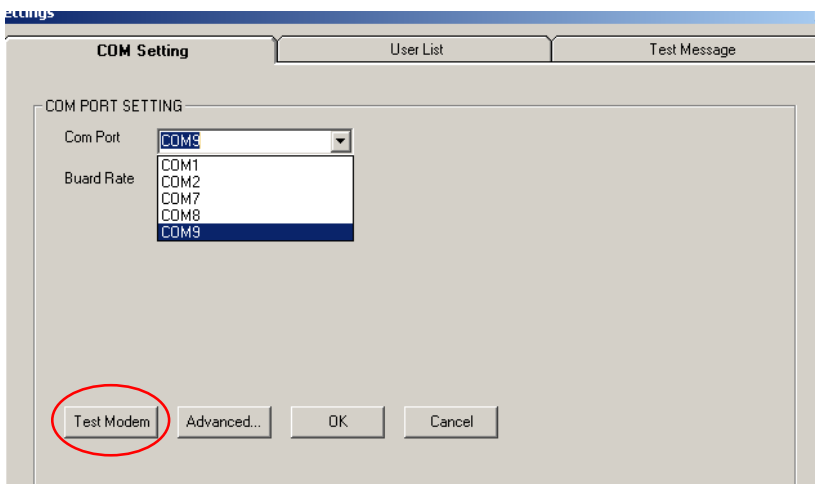
1.2 After setup done, click on the “MT4 SMS Sender”.



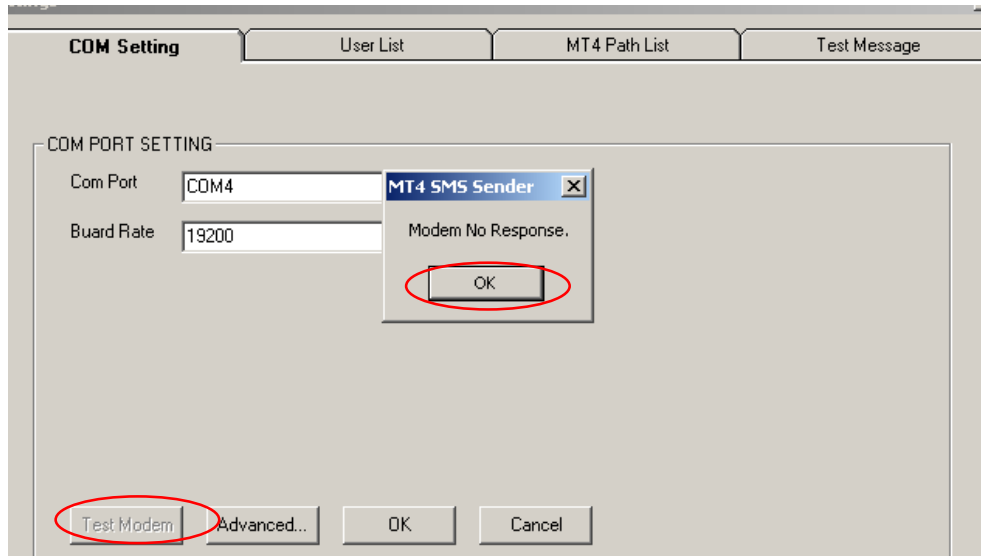
1.3 Select Options → Settings.



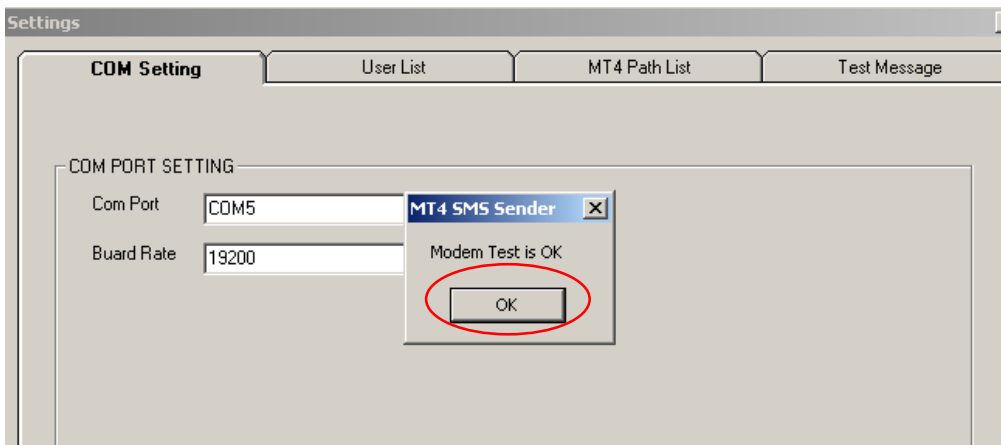
1.4 Select “COM Setting” Tab. Choose the correct “Com Port” for the GSM modem. Press the “Test modem” button to test the modem.



1.5 If the modem comport setting not configure properly, it will get an error message as picture below.



1.6 If the modem comport setting setup correctly, it will response a successful message as below.



1.7 Select the “Test Message” tab, key in the recipient “Phone No”, “Message” to test and confirm the modem work properly.

Settings

COM Setting User List **Test Message**

Send Test Message

Phone No. 81316201 Response

Message This is a test message

SEND

1.8 Select the “User List” tab, click on the “Add User” to setup for SMS recipient when sms trigger. Click “Cancel” button exit the settings form when done.

Settings

COM Setting **User List** Test Message

SR NO.	NAME	Phone No.	ON/OFF
1	TanWengTai	98765432	ON

Add User

Edit User

Remove User

1.9 Select the “MT4 Path List” tab, click on the “Add Path” to monitor the MT4 platform for sms trigger. The mt4 path required to point to folder “experts\files\”. Ex. “C:\MT4 Platform\experts\files”.

Settings

COM Setting User List **MT4 Path List** Test Message

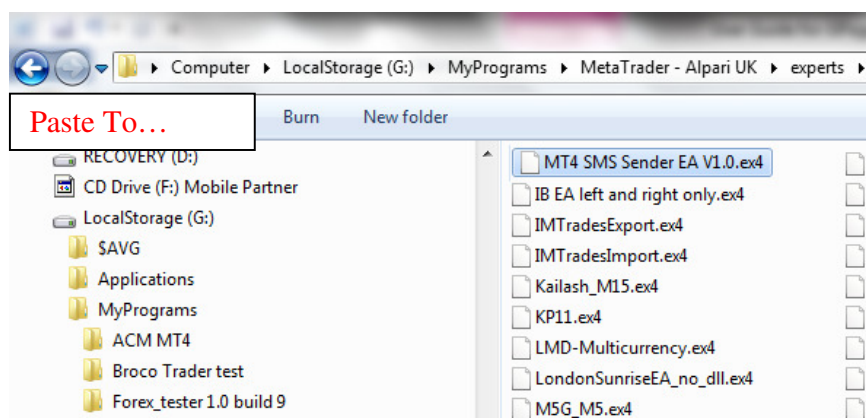
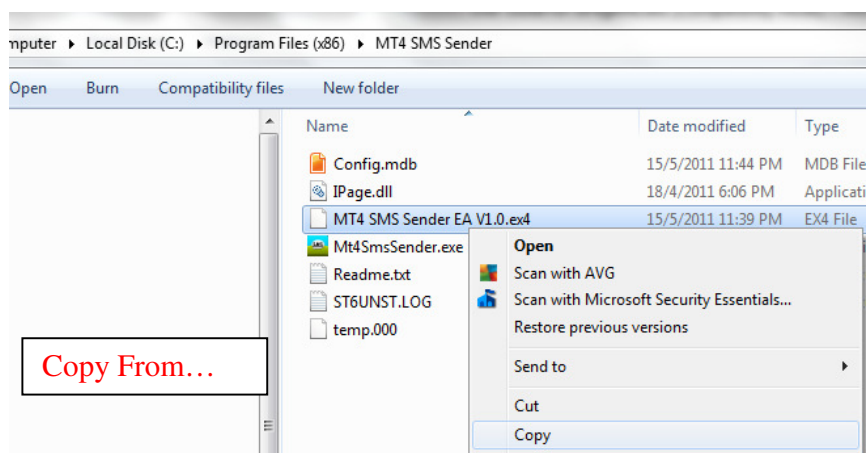
ID	Monitor MT4 Path
1	C:\MetaTrader - Alpari UK\experts\files\
2	G:\MyPrograms\FxPro - MetaTrader\experts\files

Add Path

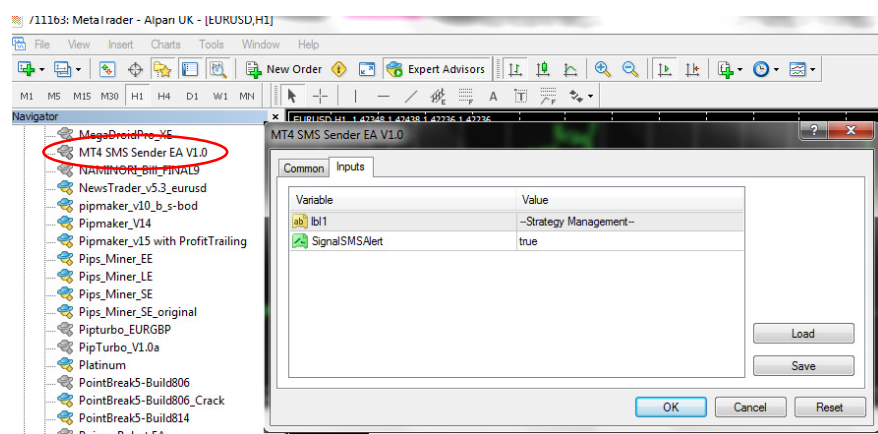
Remove Path

2. Setup MT4 EA for SMS Monitor

2.1 Copy the “MT4 SMS Sender EA V1.0.ex4” file to MT4 Platform under “Experts” folder.



2.2 Drag and drop the “MT4 SMS Sender EA v1.0” into the chart and click “OK”.



EURUSD, H1 1.42348 1.42438 1.42198 1.42212

The Comment will be part of the content in SMS

Symbol: EURUSD, Euro vs US Dollar
 Volume: 0.10
 Stop Loss: 0.00000
 Take Profit: 0.00000
 Comment: Breaking Resistance Point
 Type: Pending Order
 Pending Order
 Type: Buy Stop
 EURUSD 0.10
 at price: 1.43481
 Place
 Expiry: 2011/ 5/16 23:34
 Open price you set must differ from market price by at least 20 pips.

The screenshot shows the MT4 SMS Sender application. The left pane lists currency pairs: EURUSD, AUDUSD, and others. The central pane shows a message being sent to a test number (81316201) on 5/4/2011 at 11:39:06 PM. The right pane displays a summary of SMS activity, including 'Total Opened: 18', 'Cur Total Opened: 18', and 'Pre Total Opened: 18'. At the bottom, a table shows a list of transactions with columns for Time, Type, and Price.

Time	Type	Price
1.05.02 19:13	buy	
1.05.02 19:14	buy	
1.05.02 19:16	buy	
1.05.03 17:14	sell	
1.05.03 17:15	sell	
1.05.03 17:19	buy	

To purchase the full registered version, please email to wei_siong@yahoo.com