



---

# RELEASE NOTES

---

PACE Suite 4.2





# Table of Contents

1	PACE Suite Overview .....	3
1.1	Key Advantages .....	3
1.2	PACE Components .....	3
1.3	System Requirements.....	4
1.4	Hardware Requirements.....	4
2	Release Notes .....	5
2.1	About This Release.....	5
2.2	Important Highlights.....	5
2.2.1	Create a Response Transform.....	5
2.2.2	Enhanced Performance of Building MSI .....	6
2.2.3	Edit Permission Settings.....	7
2.2.4	Save Captured Permission Settings Using New Approach.....	7
2.2.5	New Start Screen of MSI Generator .....	8
2.2.6	App-V 5.2 (1607) for Windows 10 .....	9
2.3	Fixed Bugs .....	10
2.3.1	MSI Generator .....	10
2.3.2	MSI Editor .....	10
2.4	Known Issues and Limitations .....	11
3	Release History.....	12



# 1 PACE Suite Overview

PACE Suite is an advanced software packaging tool with intuitive user interface and set of features providing (re)packaging in Windows Installer and various virtualization formats.

## 1.1 Key Advantages

- Out-of-the-box application packaging solution
- Intelligible wizards for running complex user scenarios
- High performance when generating large packages
- Per-user license valid for any number of physical and virtual machines

## 1.2 PACE Components

PACE Suite consists of the following components:



### MSI GENERATOR

- Repackage any existing installation into Windows Installer or a virtual format (Microsoft App-V 5.x, and VMware ThinApp)
- Auto-detection of embedded installers
- Create a response transform
- Tune any existing Windows Installer package by applying your settings and saving them as a Windows Installer transform (MST)
- Include the excluded files/registry back to a package



### MSI EDITOR

- Manage the contents of an MSI in a tree view
- Import the desired resources
- Edit and manage Custom Actions
- Integrate scripts into your package
- Use a smart and advanced MSI database editor, with formatted string autocompleting, Excel-like formula bar, row reference tracking, and more.
- Create patches (MSP)
- Manage permission settings for file system and registry
- Handle upgrades easily – just let MSI Editor know which MSI you want to be upgraded at runtime.
- Publish your applications to Microsoft SCCM 2007, 2012, 2016.
- See the estimated complexity of an app right away.
- Generate package documentation containing the details about your package and configuration.
- Undo-redo any manipulation and see the changes highlighted in the MSI tables



- Automatically record your on-screen actions into a nice-looking document with screenshots and annotations

## 1.3 System Requirements

OS	Windows 10/8.1/8/7 SP1, Windows Server 2012/2008 R2 SP1
Middleware	Microsoft .NET Framework 4.6.1 ( <a href="https://www.microsoft.com/en-us/download/details.aspx?id=49981">https://www.microsoft.com/en-us/download/details.aspx?id=49981</a> ) or higher.
Privileges	Administrative privileges on the system.

## 1.4 Hardware Requirements

Processor	32-bit (x86) or 64-bit (x64) processor at 2 GHz or greater NOTE To repackage 64-bit applications or create 64-bit App-V packages, use PACE Suite on a 64-bit Windows operating system.
RAM	2 GB
Hard drive free space	1 GB NOTE Additional storage is required for your projects and packages and depends on their size and quantity.
Display	1280 x 768 resolution or higher.



## 2 Release Notes

### 2.1 About This Release

We are happy to share with you the results of our lengthy and careful work on the new 4.2 version of PACE Suite application packaging tool.

The 4.2 version has received lots of usability and functional improvements, new functions such as managing permission changes and creating response transforms, and support of the new App-V 5.2 (1607) version for Windows 10. As usual, we have detected some nasty bugs and politely asked them to leave.

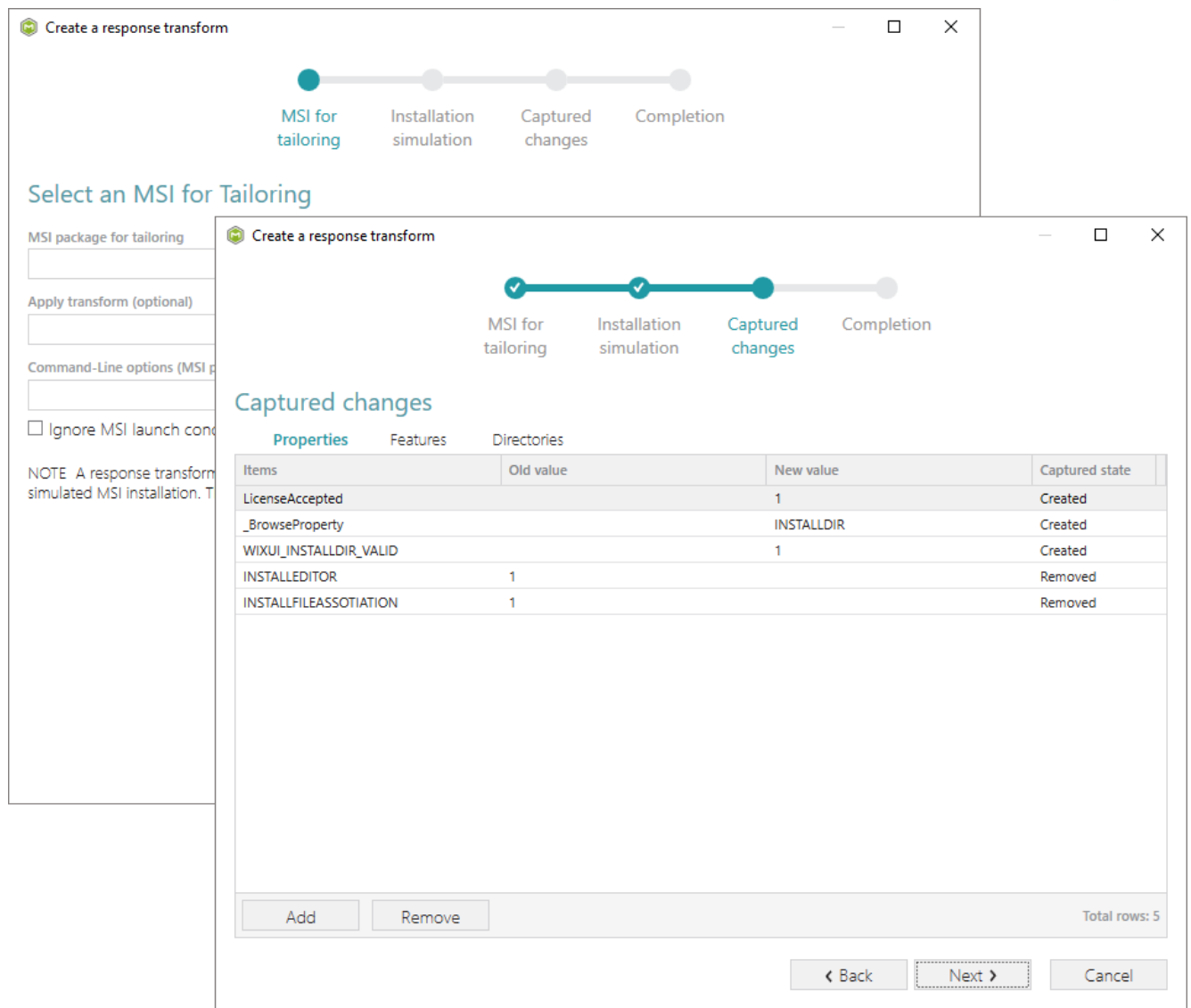
### 2.2 Important Highlights

#### 2.2.1 Create a Response Transform

A new handy wizard for creating a response transform for your MSI installation is added to MSI Generator.

Using this new functionality, you can easily capture all your inputs and changes made to the Windows Installer UI dialogs of the MSI installation. This MSI installation will be simulated, which allows capturing all necessary changes very promptly and without affecting your real system.





The Create a response transform wizard has four steps: (1) for selecting the MSI installation, additional MST and MSI Properties; (2) for simulating the MSI installation and capturing changes; (3) for reviewing, adding or removing captured Properties, Features and Directories; (4) for choosing the option of saving created response transform.

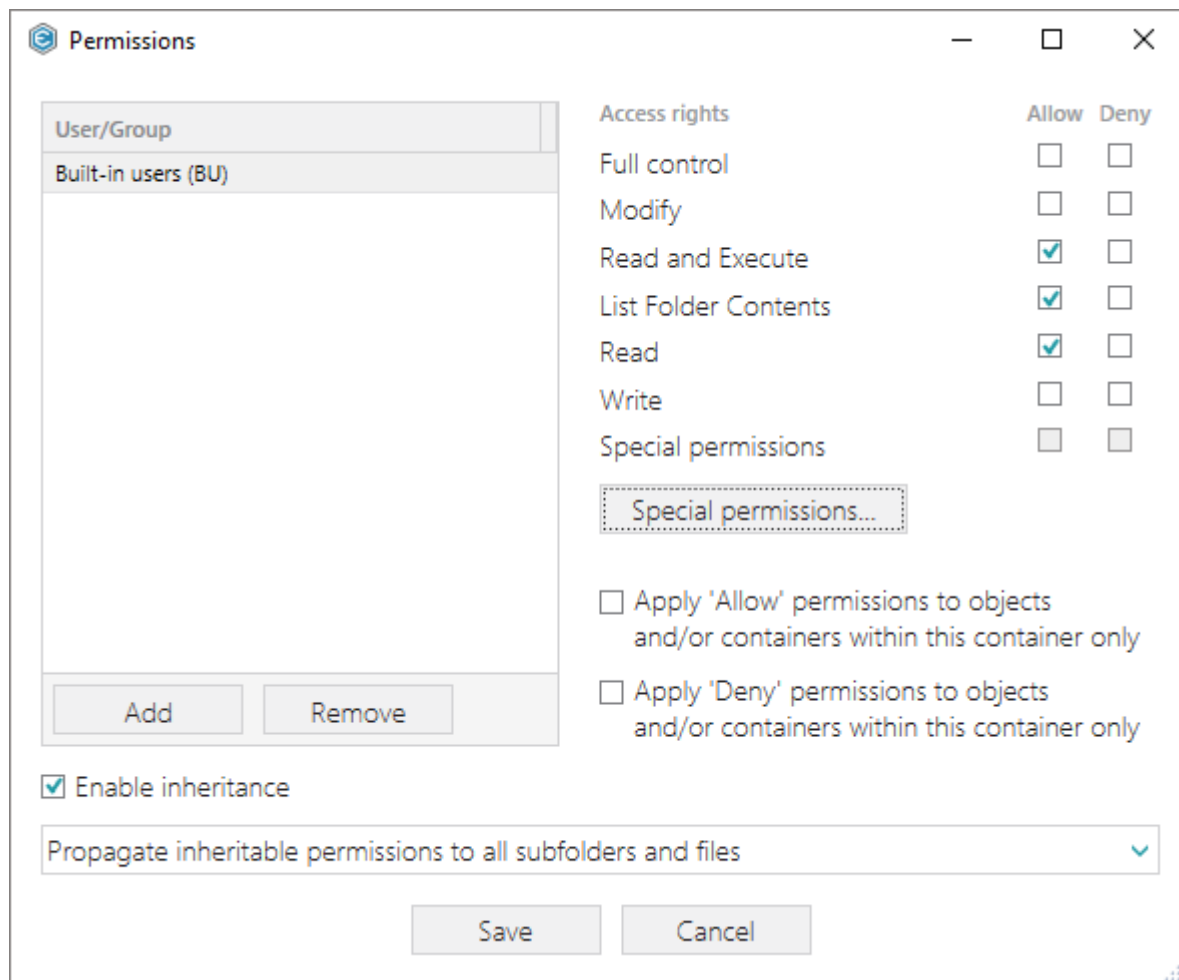
## 2.2.2 Enhanced Performance of Building MSI

We have dramatically improved performance of our algorithms of building MSI packages. New version of MSI Generator creates packages several time faster than previous one.

### 2.2.3 Edit Permission Settings

Meet the new functionality of managing permissions settings for files, folders, and registry keys of your MSI package. Now you can easily add new, discover, modify or remove existing permission settings of resources of your package using the Files and Registry tabs of MSI Editor.

All your permission settings will be saved using SecEdit and will be written only to the standard MSI tables. This exquisite approach of saving permissions does not have any black-boxes and works for all MSI schemas.



The Permissions dialog of MSI Editor was designed in accordance with the approaches, utilized for the well-known Microsoft Windows's permissions dialog. This allows you to find all necessary user groups, access rights, and the rest of available deep security options.

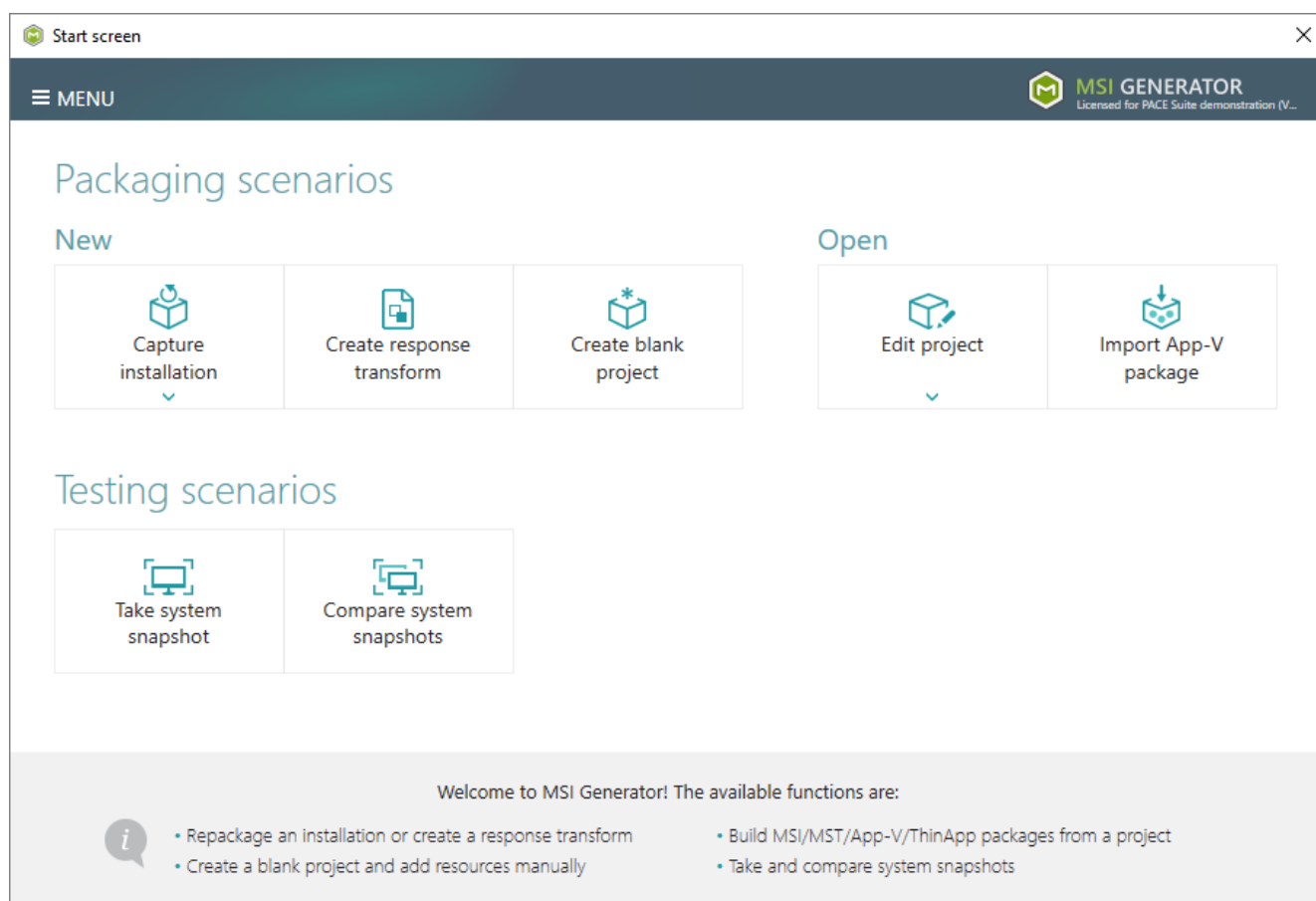
### 2.2.4 Save Captured Permission Settings Using New Approach

All your permission settings that were captured with help of MSI Generator will be saved to MSI using new exquisite approach that writes data only to standard MSI tables, uses SecEdit tool, does not have black-boxes and works for all MSI schemas.

The major benefits of this new approach are: (1) instant editing permissions at any time without rebuilding the security template file; (2) editing permissions either using Permission dialog or manually directly via the IniFile table; (3) full compatibility between MSI Generator and MSI Editor.

### 2.2.5 New Start Screen of MSI Generator

We have redesigned the Start screen of MSI Generator for the better usability. We hope that grouping all essentials functions by the Packaging and Testing scenarios ensures better navigation and minimizes potential confuses.

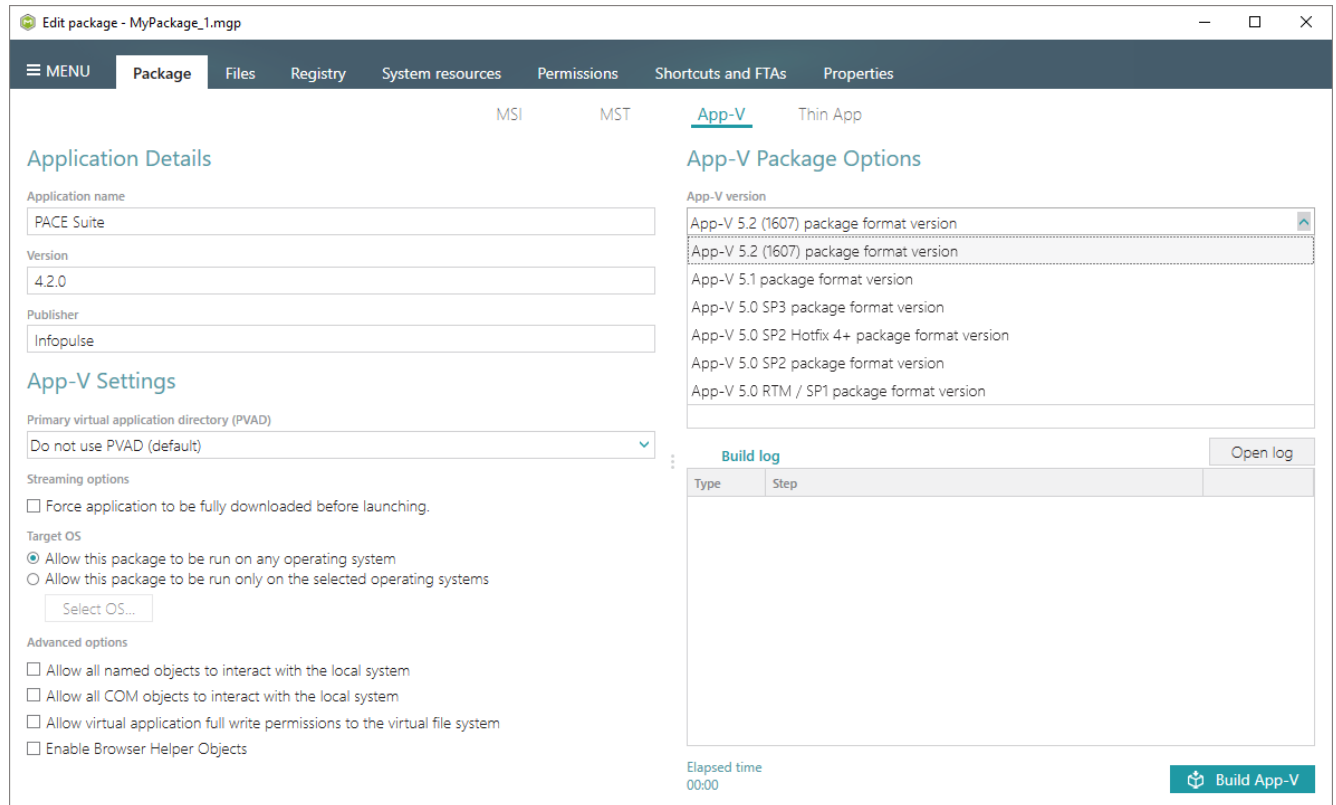


P.S The Create response transform wizard is launched from this Start screen.



## 2.2.6 App-V 5.2 (1607) for Windows 10

Recently, Microsoft has released a new version of App-V client that is already included into Windows 10 Enterprise 1607 build. PACE Suite is moving with the times and supports the new App-V 5.2 (1607) for Windows 10.



The option of generating new App-V 5.2 (1607) package format version is available in new PACE Suite 4.2 version.


## 2.3 Fixed Bugs

### 2.3.1 MSI Generator

Bug #	Description
26130	An error during comparing snapshots.
26450	Commented rows in the selected REG file were imported to the project.
25255	Floating crash on capturing system changes using Snapshotting method with enabled option for scanning Permission changes.
18948	Incorrect capturing binary registry values.
25756	Wrong package naming for imported App-V packages.
27129	Crash on re-building App-V package created with the help of MS Sequencer
25381	Some of captured App-V File Type Associations (TFA) are not saved to the App-V package.
27130	Some of App-V File Type Associations (TFA) are lost during opening an existent App-V package.
27310	Error on rebuilding App-V package, created with help of MS Sequencer.
26847	Issue with updating package name during the capturing process.
27320	The Summary Information is not saved to the MSI settings profile.
27324	Crash on entering invalid symbols to the 'MST file name' field.
27091	A value of the 'MST file name' does not match with the package name for the captured projects.
25189	Installed printers are not captured.
23241	Some of excluded registry value is saved to the generated ThinApp package.
23237	The progress bar is not displayed on importing large amount of files to the project.
27528	Docu Generator is not launched from the MSI Generator during the capturing process.
27540	Issue with importing registry from the REG file to the project.
22911	Application is not responding during importing registry from the huge REG file.
27517	Floating error on building App-V package.
27529	Changing default package folder with files inside leads to unexpected result during moving these files to the new location.
26738	Crash on selecting the 'Capture installation guide automatically' option during the capturing process.

### 2.3.2 MSI Editor

Bug #	Description
26642	Crash on reverting to original state after importing Merge Modules.
23645	Wrong import of registry entries that contains square brackets.
23354	Crash on applying two MST in a row.
24938	Issue with importing DWORD values from the REG file.
23971	The remove registry operation is available for read-only MSI packages.
24311	Floating issue with updating UI of the Features/Components tab.
21950	A dialog for entering name of the new registry key is not displayed.



21978	Incorrect import of HKEY_CURRENT_USER registry entries from the REG file.
24443	Error adding Standard Actions via the Custom Action tab for specific MSI schema.
27232	Sometimes it does not create new entry in the Media MSI table after importing files to new CAB file.
27234	The progress bar is not displayed on the retrieving file details.
27235	The progress bar is not displayed on the rebuilding CAB files.
27239	Floating crash on rebuilding the selected CAB file.
27319	Error on importing some COM objects from the system folders.
27350	In some cases, wrong folder icon is displayed for non-empty folders on the Files tab.
27087	Issue with displaying data on the Properties tab after the adding new property.
27318	Failed to rebuild internal CAB files after changing the Image Type in the Summary Information stream.
23373	Crash on applying specific MST that drops standard MSI tables.
27522	Publish package to SCCM server failed with error due to script could not be found.
27564	Sometimes the Save menu item is disabled after importing MSI tables or creating new registry key.
26824	Error on 'Sort changes first' after import files.
17634	Limits of CAB file format are not met on importing files.
20817	A sequence number of newly added Custom Action is not unique.
27542	Go to the Registry table from the selected registry key does not work properly.
27592	Floating crash on removing folders on the Files tab right after removing rows from the 'Control' MSI table.
27613	Floating crash on creating new URL or importing LNK shortcuts.
27524	Incorrect displaying result of two MSI comparison.
27615	Crash on importing Merge Modules.

## 2.4 Known Issues and Limitations

- MSI Editor: Undoing a large number of actions at once can cause unwanted results. Please apply UNDO in a sequence.
- MSI Editor: Opening big Windows Installer packages (500MB in size and more or 50K rows in a table) may take long time.





## 3 Release History

- [PACE Suite 4.1](#)
- [PACE Suite 4.0](#)
- [PACE Suite 3.5.5](#)
- [PACE Suite 3.5](#)
- [PACE Suite 3.4.2](#)
- [PACE Suite 3.4.1](#)
- [PACE Suite 3.4](#)
- [PACE Suite 3.3 – 3.3.1](#)

