

## Evaluate – Password Manager

Please follow the steps below to quick start Password Manager application. Please refer to the [Quick Reference Manual](#) for More details.

### Step1:Install application

### Step2: Free Trail and Registration of application

You can use Password Manger free for 30 days. After that you have to register to continue using the application.

[Know More...](#)

### Step3: Launch Password Manager Application

Once application is launch, enter the default “master password” as “**saltriver**” to use password manager. Make sure to change master password before adding account to auto fill password in password manager. Re-login to application after changing the password.

### Step4: Create account to auto fill the password

- After a successful login with the master password, open your Internet browser (Password Manager support Microsoft Internet Explorer only at this time).
- Go to a web site where you are having an account that you wish to manage through Portable Password Manager.
- In most of the cases the application will auto highlight the color of the available account/user name and password fields by changing the input box's background color to yellow in order to alert the user that these fields can be used to setup the account information.
- To add the information of this account to the database right click on the account/user name field.
- The “Create New Account” dialog will appear with account/user name and URL fields pre filled from the current web screen. Enter other details like password, Alias Name for the account.
- Next time when browser opens this site, this (added) account can be auto fill by password manager application. Select the Alias account name and username and password will be filled by the application.

[Know more...](#)

### Step5: Adding fields to field recognize field table

You can manually add the fields (username and password) to password manager in case that website is not added to field recognized table and thus the username and password fields are not yellow.

## Quick Reference Manual - Password Manager

Password manager is an application allows you to keep track of your web accounts password on a USB drive or on a Hard disk in an encrypted manner so that you can simply login by clicking on the account detail.

You can use Portable Password manager right away by spending some time reviewing this Quick Start Guide:

Installation Guide.....	2
Free Trial.....	3
Main Launcher Application .....	3
Create an account for auto fill the password.....	5
Adding fields to the field recognizer mapping table.....	7
Login In to your accounts .....	8
Features – Navigate through accounts, Setting, Register and about.....	9

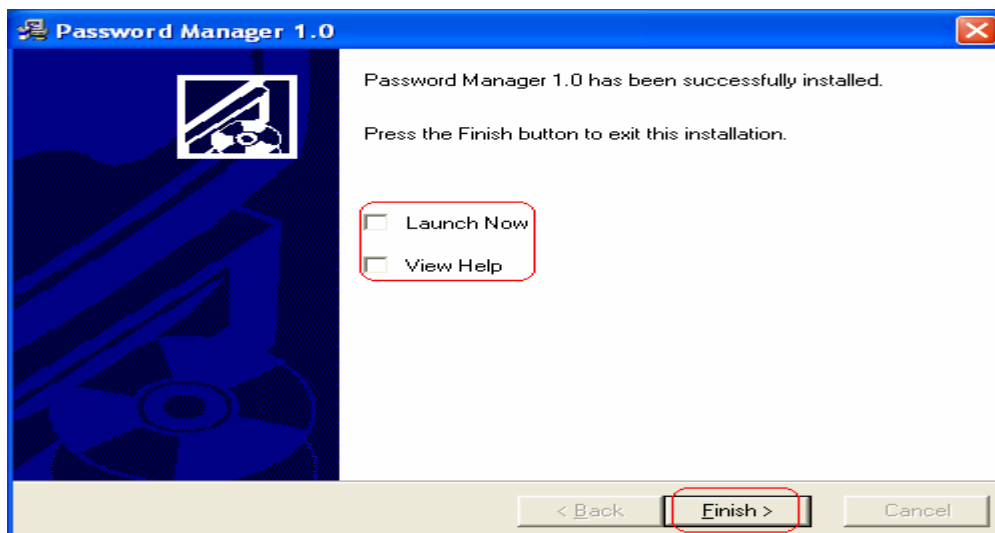
### Installation Guide

To install Portable Password Manager you can Down Load the setup from the following link.

[Setup](#)

Now follow the steps below then you are ready to follow other steps

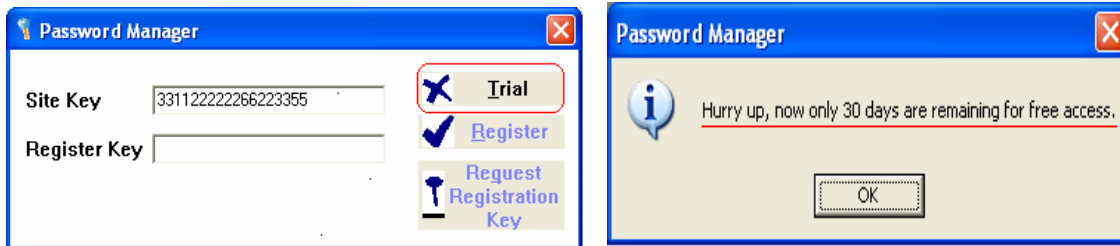
1. Run the downloaded setup.exe
2. Follow the instructions during the installation process
3. On completion of the installation, a message window showing successful installation will appear. It offers two options, launch password manager now or view the help document. Select any one of the options of your choice. Press **Finish** button to end the setup.



## Free Trial

If you want to evaluate password manager before going for registration, Password manager allows you 30 days free trial.

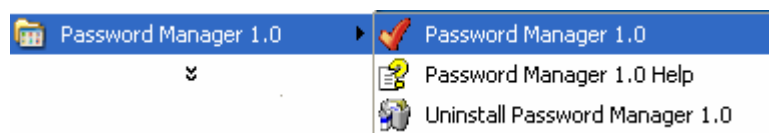
To use the trial click on Trial button every time you start the utility, you will be able to continue using Password Manager till the trial version expires.



## Main Launcher Application

After the successful installation of the Password Manager Application, Please run the Password Manager 1.0 from the Start Menu.

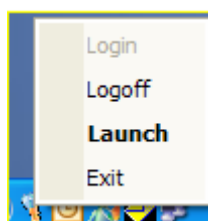
**Note:** Password Manager will be automatically launched the next time when you reboot your computer.



The Password Manager Application's icon should now appear in the system tray (*\*lower right corner of your windows screen*), once the application is launched.



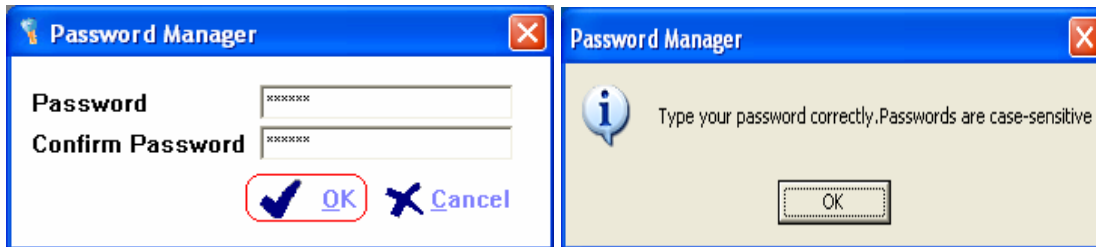
Right click on the icon to display the menu options as shown below to Login, Logoff, and Launch or exit the application.



After you select the **Login**, the application will ask for the *\*master password* if a removable drive is present and it contains the database created during setup. On your first time login, please enter saltriver as the password (*default password*).

**IMPORTANT:** After the first successful login and before you attempt to create any account please change your master password immediately by launching the application and selecting **settings** from the menu options.

- *A master password is a single password used to access all your accounts set in the application, it does not have any relation with the accounts and it can be different from all the passwords given to your accounts.*



**Notes:**

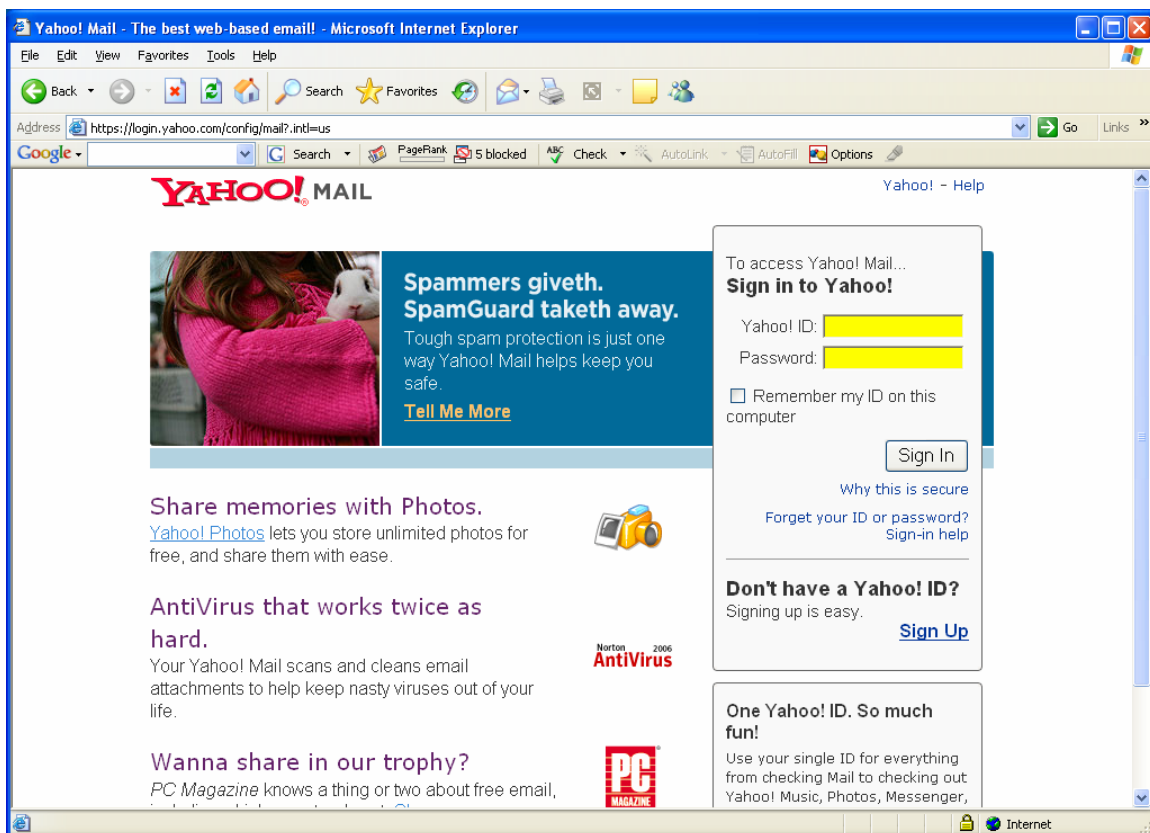
- Passwords are case-sensitive.
- In the event that the dialog for the password does not show up please make sure that the removable drive is inserted correctly.
- Upon removal of the drive the application will discontinue to work, you will be automatically logged off and the Application will not show the Master Password Login Screen even if you select the Login option.
- Upon insertion of the removable drive containing the database, the Master Password Login dialog will automatically appear on your screen if the Application is running.
- If the drive with the database is present at the time of Boot Up the application will automatically display the Master Password dialog.
- If the login fails the dialog box showing “Type your password correctly” will appear. Re-enter the password carefully.

## Create an account for auto fill the password.

### Note:

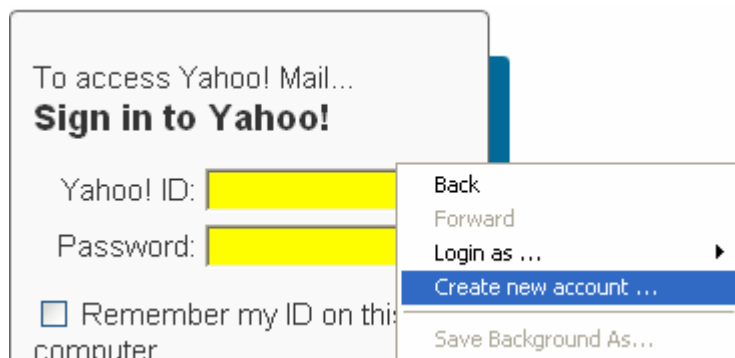
- An Internet connection is required for the Portable Password Manager application to work.
- This version of Portable Password Manager support Microsoft Internet Explorer only, so if you will try to use your Password Manager in any other browsers, for example Mozilla firefox, the application will not work.

After a successful login with the master password, open your Internet browser and go to a web site where you are having an account that you wish to manage through Portable Password Manager. (For example we are showing the login page for yahoo email).



In most of the cases the application will auto highlight the color of the available account/user name and password fields by changing the input box's background color to **yellow** in order to alert the user that these fields can be used to setup the account information, if the fields on the page do not highlight the account information as you visit the page then either you are **logged out** from Portable Password Manager or the details are not added to the field recognizer mapping table. Please refer to Adding Fields to the field recognizer mapping table section of this guide to add the details to the recognizer-mapping table.

Once the account/user name and password fields have been recognized by the application, to add the information of this account to the database right click on the account/user name field. A context menu will be displayed. Select create new account option from the menu. . If you have already entered the username and password, then one more option will be shown in the context menu named “Add <your account name>”. Selecting this option will fill your account name in the create new account dialog appears.



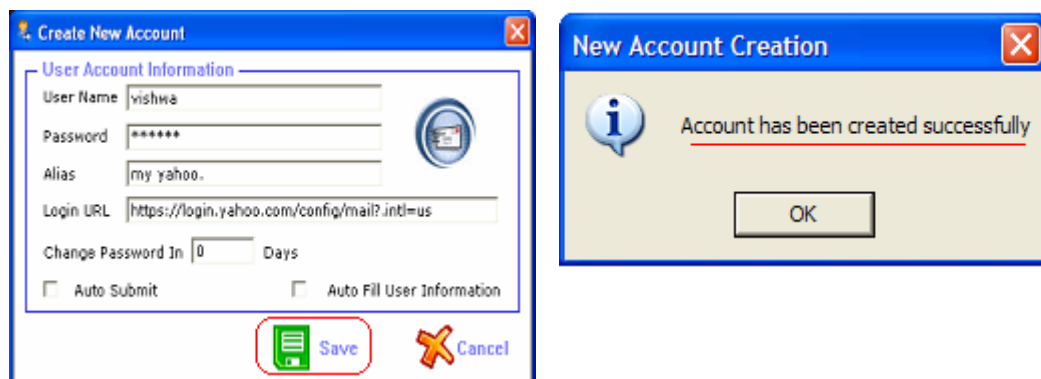
The “Create New Account” dialog [shown as below] will appear with account/user name and URL fields pre filled from the current web screen. Enter other details like password, Alias Name for the account (*for example My Hotmail, Mom’s Yahoo ... etc.*), which will be used to Group your accounts.

Enter the number of days that you would like to keep as the interval for Portable Password Manager to remind you to change your password.

Check the flags for Auto Submit (*avoids clicking on “SUBMIT”, “LOGIN” or “ENTER” buttons, automatically submits the account detail to the page*).

When Auto fill option is checked the user information will be filled automatically as soon as the user enters the page.

Press “Save” button to save the information.



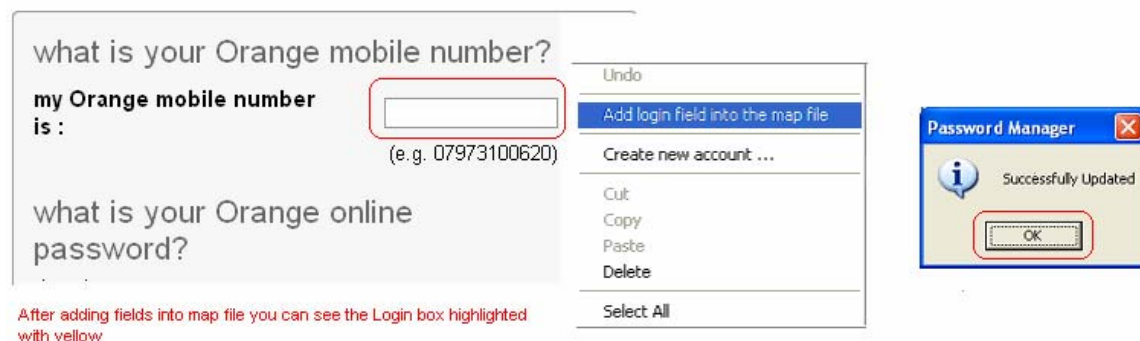
**Note:** User will not be able to create duplicate records; if you are trying to add the same account twice the message “Account already exists” will be displayed.

## Adding fields to the field recognizer mapping table

As there are millions of login pages in the Internet, there are many variations in the account/user name and password fields. So all those could not be included in our field recognition table.

We have addressed this issue by allowing the user to add these fields manually to the field recognizer-mapping table. If the account/user name and password fields are not recognized by the application, user will be able to add the details by right clicking the field. On right clicking, the option named “**Add login field to the map file**” should be selected to add the field to the database. Perform the same with password field too if it is not recognized. The user may have to close and reopen the page to see that fields are added into the database. Reopen the page and you will be able to add the account to the Password Manager (*Next time you visit this page the account/user and password fields should be highlighted without any further action*).

please sign in or register



please sign in or register



## Login In to your accounts

If your login page shows your account/user name and password in yellow simply right click on the account/user name field and a context menu shown as below will be displayed.

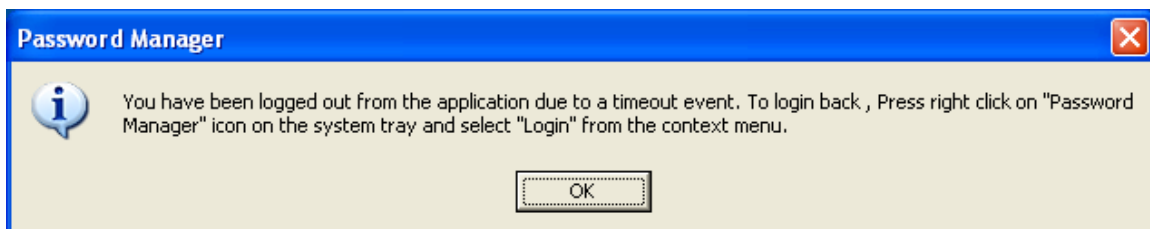


Based on the created accounts in your database a list of available accounts for this web page will be listed (*In our example Mom's and My Yahoo have been setup in the database*). Select an appropriate account and the account/user name and password fields will be automatically filled up. If the "Auto Fill" flag is checked at the time of account creation, the information will be filled up automatically and if the "Auto Submit" option is checked then the submission of information will also be done automatically.

For your protection during the login period the application will check for the auto logoff time that has been set in the **settings** options (*default 3 minutes*).

Log-off time interval  Minutes

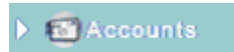
Auto logoff will occur accordingly and the following message will appear in your screen.





## Features – Navigate through accounts, Setting, Register and about

When you start the Portable Password Manager you will find four options on the main interface.

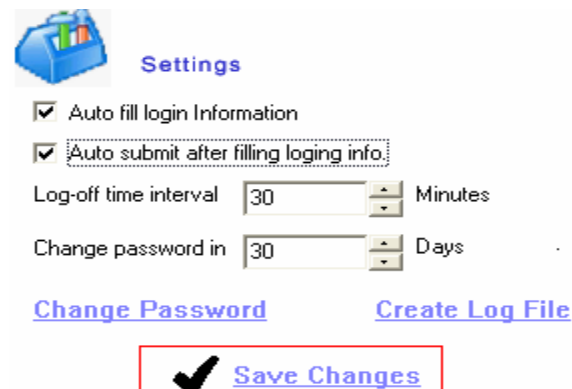


User will be able to view all the information like Username, Alias and addresses of all the existing web accounts.

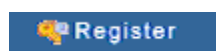
[Login](#) [New](#) [Edit](#) [Delete](#) [Refresh](#) Options help you to manage the User account information. **Select** the Account then press **Edit** to edit existing account click on Save to apply the changes. You can **Delete** and **Refresh** accounts in same way.



Here the application settings can be changed as per requirement.



Checking auto fill login option will fill up the login information of a page added in Password manager as soon as the user enters the page. Auto submission will submit the information filled automatically on checking the auto fill option.



After the trial expires, if you would like to keep using “Portable Password Manager” it is necessary to obtain a full registration code by buying a license for the product.

You may enter your registration information by selecting the “Register” option from the Menu or by clicking on the Register icon on the top right corner.



Registered Products will have the “About” option displayed. Where the version and the ID of the product will be displayed.