

SIMILAR IMAGES FINDER

1.1

USER GUIDE

<http://similarimagesfinder.net/>

[Best Programs](#)

by

[Rafał Frączek](#), Kraków 2009

1. What is Similar Images Finder?

Similar Images Finder (SIF) is a free utility that will help you to find both similar and identical images. The application can run in Windows and Linux.

2. How SIF is distributed?

SIF is distributed in two separate editions: the command line version and the GUI version. Command line version is available for both Windows and Linux. GUI version is currently available for Windows only.

3. How SIF works?

SIF compares a given reference image with all images in the specified directory. Results are saved in the report file. In case of command line version, the report file is named “similar.html”. In case of GUI version, the report file is placed in the same directory as the reference file.

4. What are the requirements for Similar Images Finder?

SIF GUI version does not have any special requirements.

SIF (command line version) uses [Image Magic](#) to read image files.

- **Windows**

SIF is distributed together with *convert.exe* tool that is a part of Image Magic. So, you don't need to install any additional software.

- **Linux**

If Image Magic is not installed on your computer, you need to install it before SIF can run on your machine.

5. How to install SIF?

SIF does not require any installation. Simply, unpack the archive and run the appropriate executable file.

6. How to use SIF GUI version?

- Launch the program.
- click “Reference file” button and choose the reference file. Other files will be compared to this file.
- Click “Add directories” button and select directories with image files.
- Click “Start” button to start searching process.

7. How to use SIF command line version?

The general syntax is as follows:

```
sif -source image -directory directory optional parameters
```

The possible parameters are:

- **Required parameters**

-source

Location of the reference image (including full path)

-directory

Location of a directory with image files. The reference image will be compared to all files in this directory.

- **Optional parameters**

-subdir

browse subdirectories in the given directory. By default, this option is off.

-silent

No output in console

-help

displays help

8. Example

- **Windows**

```
sif.exe -source c:\image.jpg -directory d:\images
```

The *similar.shtm* file will be saved in the *d:\images*

- **Linux**

```
./sif -source /home/user/image.jpg -directory /home/user/images
```

The *similar.shtm* will be saved in the */home/user/images*

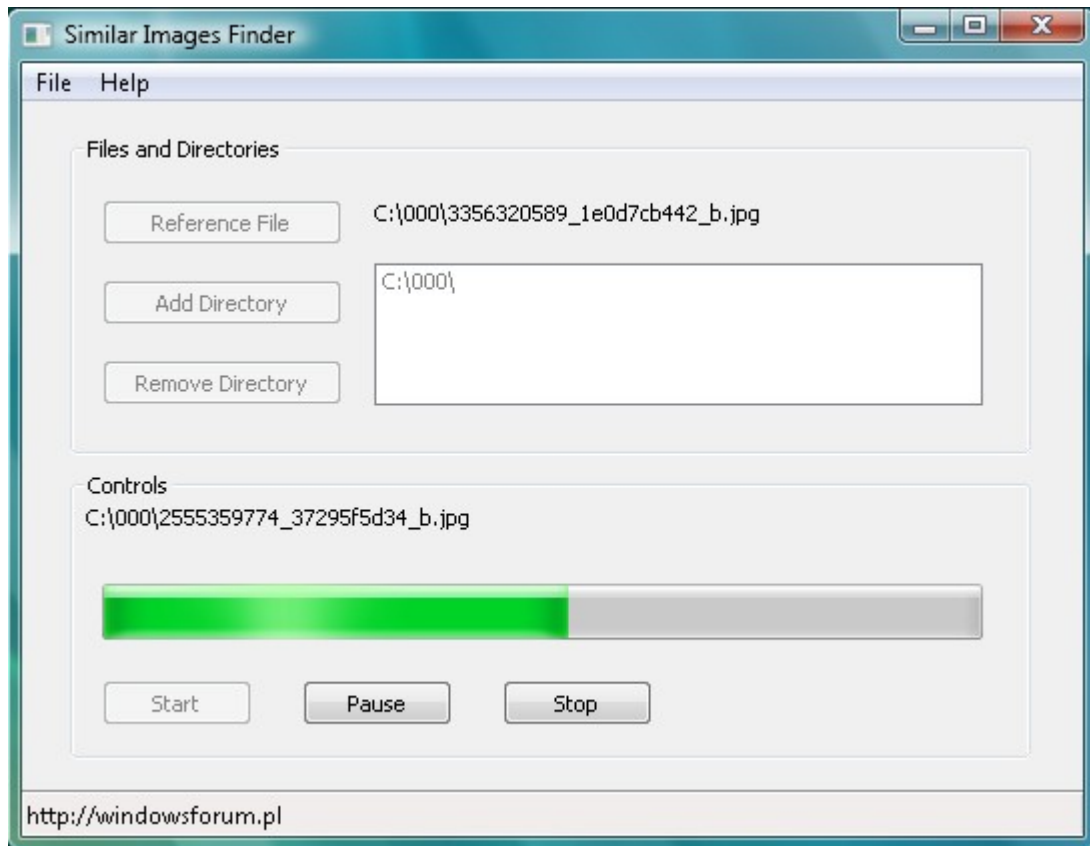
9. Future development

All feedback (e.g. bug reports, feature requests, etc.) is appreciated. Please send it to rafal [at] similarfilesfinder.net.

10. Project history

- Version 1.1 (July 2009)
GUI interface added
- Version 1.0
The first SIF release

11. Screen-shot



12. Other software

- [Free YouTube Downloader](#)
- [Duplicate Files Searcher](#)
- [VirtualDub deinterlace](#)