

# Super Static ActiveX Control v1.0

## Table of contents

<b>1 INTRODUCTION.....</b>	<b>2</b>
<b>2 FEATURES.....</b>	<b>2</b>
2.1 TEXT ALIGNMENT.....	2
2.2 VERTICAL CENTERING OF TEXT .....	3
2.3 TEXT FORMATTING .....	3
2.4 BACKGROUND FILL OPTIONS .....	4
2.5 TEXT EFFECTS.....	5
2.5.1 <i>Blinking Text</i> .....	5
2.5.2 <i>Marquee Text</i> .....	5
<b>3 ABOUT THE DEMO APPLICATION .....</b>	<b>6</b>

# 1 Introduction

Super Static ActiveX Control is a text label with enhanced features. This is similar in purpose to the *static text* control in Visual C++ and the *label* in Visual Basic. Super Static is elegant and user friendly. Features of the Super Static control are given in the following sections.

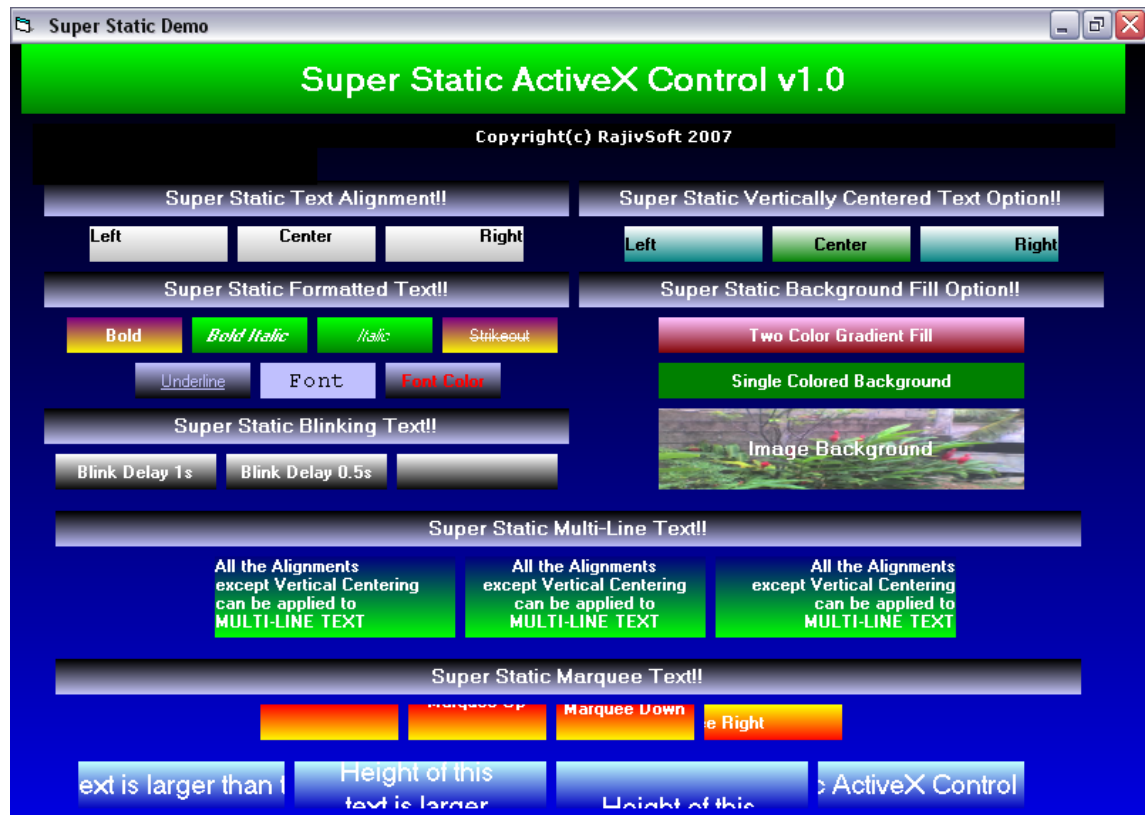


Figure 1 A demo application showing the functionalities of the control

## 2 Features

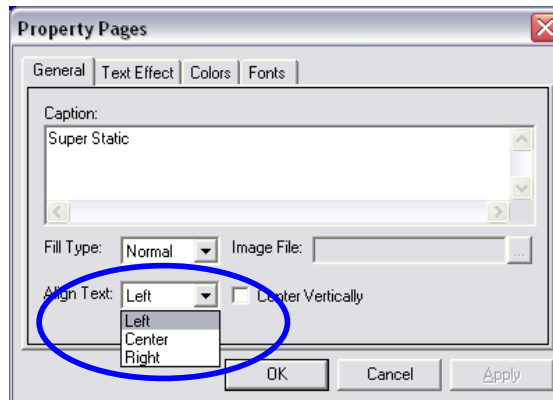
### 2.1 Text Alignment

Super Static supports three types of text alignments as given in the image below.



Figure 2.1.1 Different Types of Text Alignment

These alignments can be applied by selecting the required type of alignment in the **General** Property Page, as shown in the screen shot below. It is easy as that!!



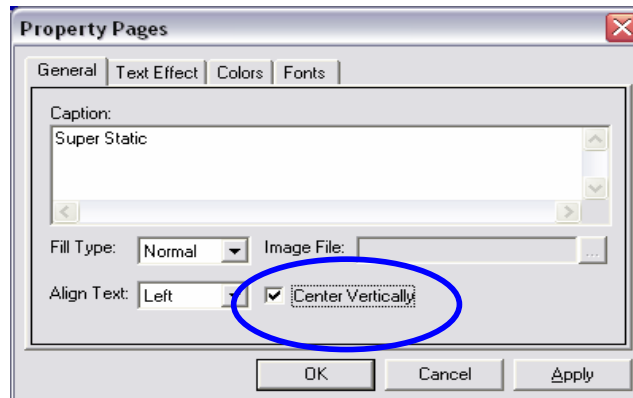
## 2.2 Vertical Centering of text

Vertical Centering of the display text is possible with Super Static!! This feature is supported for **single line text only**.



Figure 2.2.1 Vertically Centered Text

To apply this property, Check or Un-Check the checkbox in the **General** Property Page as shown in the screen shot below.



## 2.3 Text Formatting

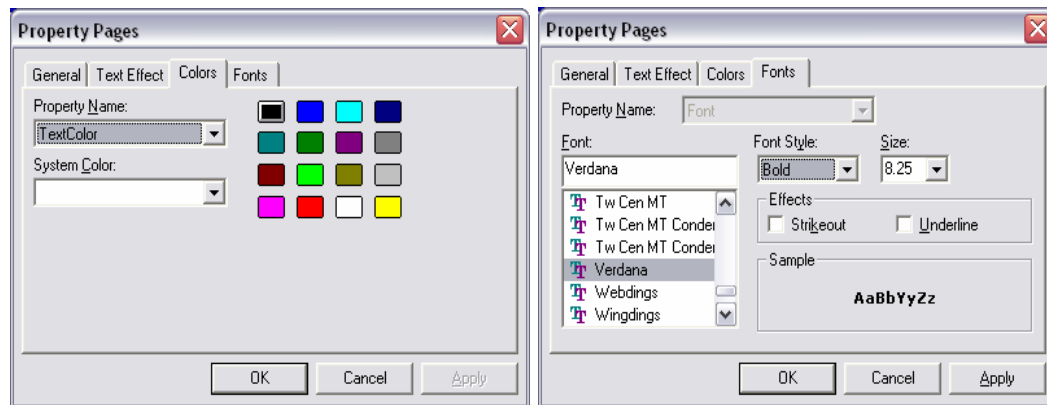
The following Text Formatting can be applied to the label text:

- **Bold**
- *Italic*
- ***Bold Italic***
- ~~Strikeout~~
- Underline
- Font Style and Size
- Font Color



Figure 2.3.1 Formatted Text

These can be done by few clicks using **Colors** and **Fonts** property pages.



## 2.4 Background Fill Options

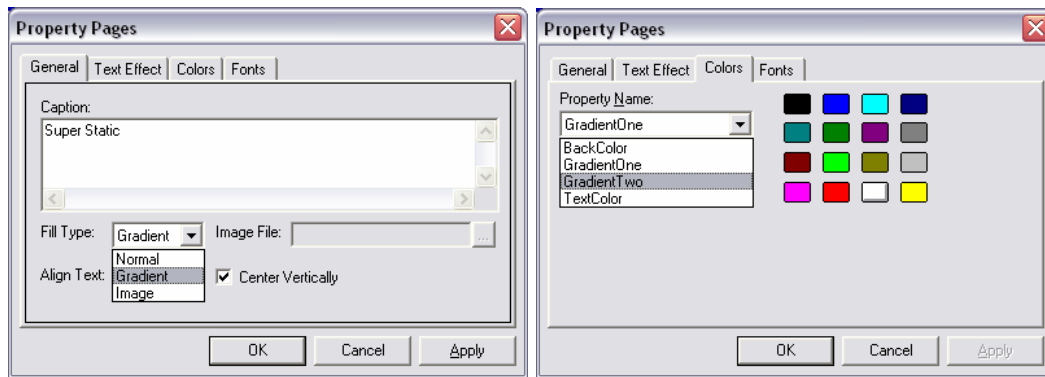
Super Static v1.0 provides three types of Background Fill options:

- Two Colored Gradient Fill
- Single Color Background, AND
- Image Background



2.4.1 Different Fill Options

In order to apply Gradient Fill, upper and lower colors should be set via the **GradientOne** and **GradientTwo** properties in **Colors** property page. These are the upper and lower colors respectively. If the Normal Fill Type is selected the **BackColor** property must be set to the preferred color. The image Fill Type requires an image file **path** to be specified.



## 2.5 Text Effects

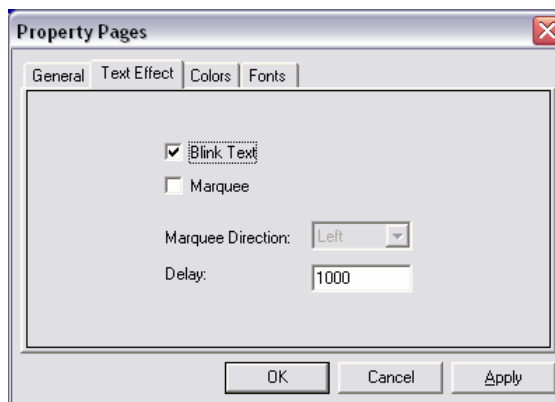
Super Static provides the following text effects.

### 2.5.1 Blinking Text

Blinking Text blinks the label text with the specified delay!!



2.5.1.1 Blink effect applied

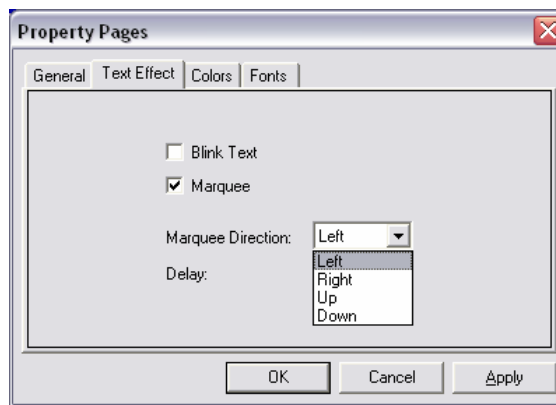


### 2.5.2 Marquee Text

This is similar to the Marquee in web pages. Four marquee directions Left, Right, Up and Down are available in this version of Super Static. Movement speed of the text relies on the specified delay.



2.5.2.1 Marquee effect applied



**It is possible to apply both the blinking effect and marquee at the same time with a common delay!!!**

### 3 About the Demo Application

The demo application shows the features of the Super Static ActiveX control. The form in the application has Super Static controls **only**. The control can be used in various ways, e.g. as background, apart from being used as a text label. The demo application shows the character "?". The complete version **will not** have this!!

**The Super Static ActiveX control file (SuperStatic.ocx) will be emailed within 24 hours of purchase!!**