

SASE SHAM, INC.

Wireless AutoSwitch Vista Installation Guide

Wireless AutoSwitch Installation Guide

© Sase Sham, Inc.
7 Greenridge Ave • Suite 5B
Phone 718.930.1990 • Email sase@saseshaminc.com

Table of Contents

INTRODUCTION	1
BASIC INSTALLATION.....	1
BASIC USAGE	6
DIFFERENT MODES OF OPERATION	7
CHANGING MODES AND LICENSE KEY	8
ADVANCED INSTALLATION	9
WHAT IT DOES.....	9
KNOWN ISSUES.....	10
DIFFERENT VERSIONS.....	10
SUPPORT.....	10

Introduction

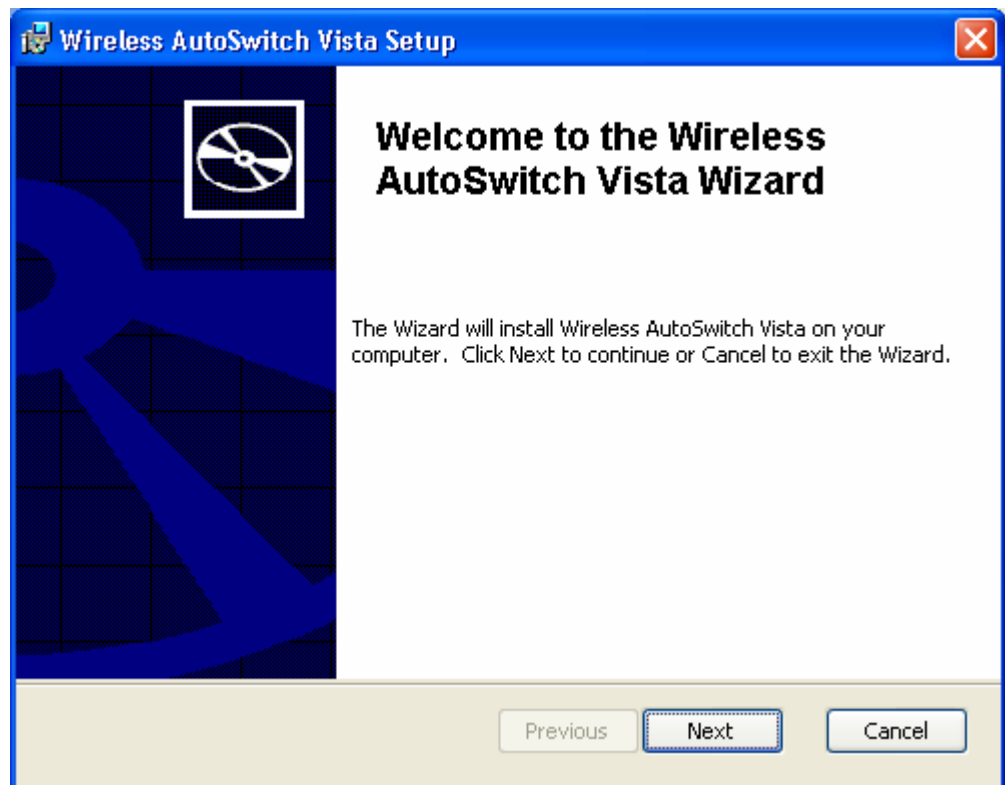
This manual will guide you through the installation and use of Wireless AutoSwitch. Whether using it for personal use or corporate deployment you will find all necessary installation information below.

Wireless AutoSwitch runs as a service and will automatically disable your wireless card when you connect to a LAN (hard wire) connection, and re-enable the wireless card when there is no LAN connection. This ensures that you are always using the fastest connection for network traffic. In the office this helps reduce redundant network connections, while still helping your employees seamlessly transfer from wired to wireless network connections.

For offices that are wireless security conscious this application makes sure the laptop's wireless card is off when the user is wired into your network.

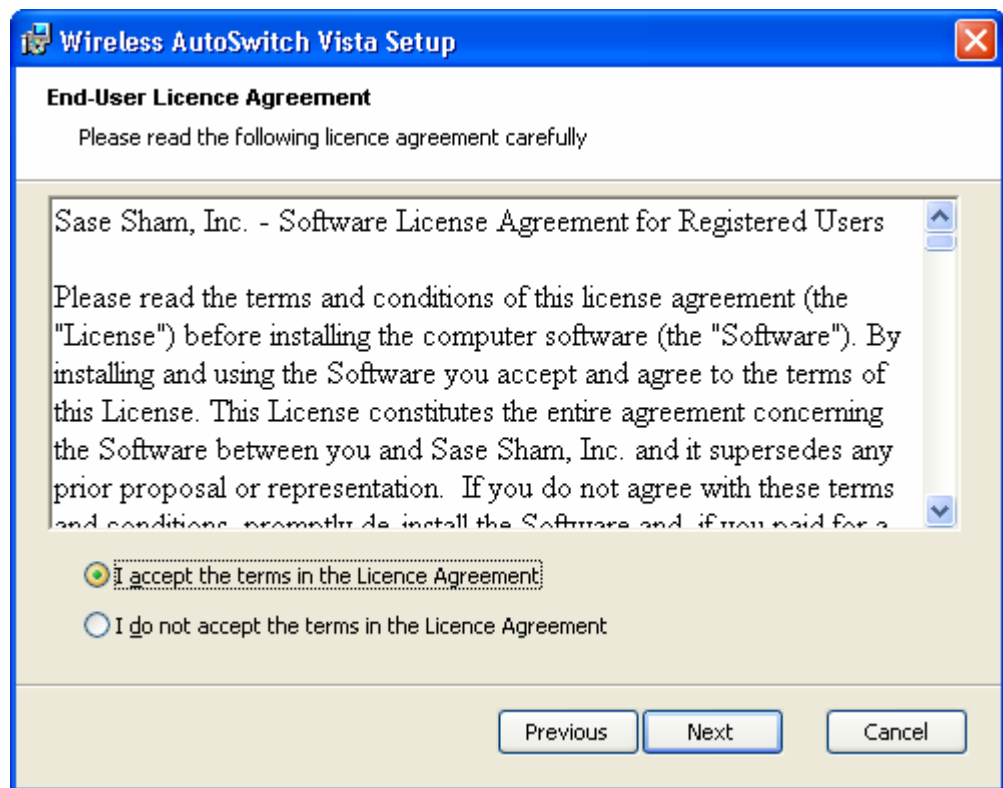
Basic Installation

For a basic installation all you need to do is run the downloaded msi and you will be see the following dialog. Click **Next**.



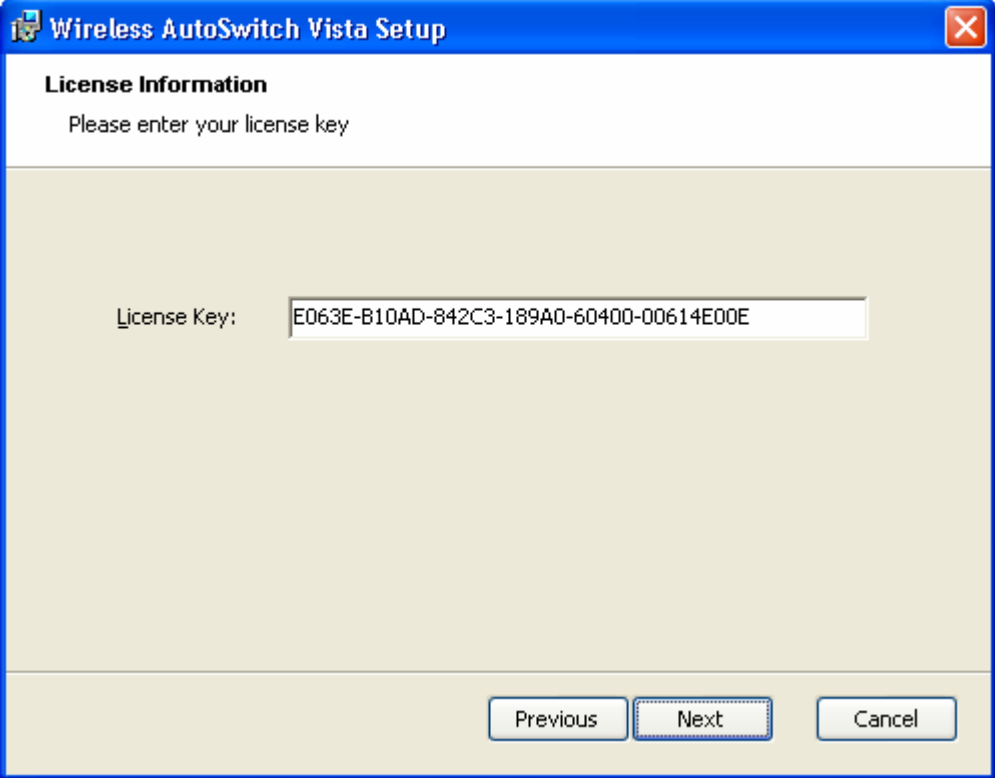
WIRELESS AUTOSWITCH INSTALLATION

Now you will see the License Agreement dialog. Read the license agreement and select “I accept the terms in the License Agreement” and click **Next**.



WIRELESS AUTOSWITCH INSTALLATION

Now you will see the License Information dialog. The dialog will be pre populated with a default license key that will give you a 30 day trial of the application. If you have a permanent license key enter it. Click **Next**.



The image shows a Windows-style dialog box titled "Wireless AutoSwitch Vista Setup". The dialog has a blue title bar with a close button (X) in the top right corner. The main content area is light beige. At the top, the text "License Information" is displayed in bold, followed by the instruction "Please enter your license key". Below this, there is a text input field labeled "License Key:" containing the default license key "E063E-B10AD-842C3-189A0-60400-00614E00E". At the bottom of the dialog, there are three buttons: "Previous", "Next" (which is highlighted with a dashed border), and "Cancel".

Wireless AutoSwitch Vista Setup

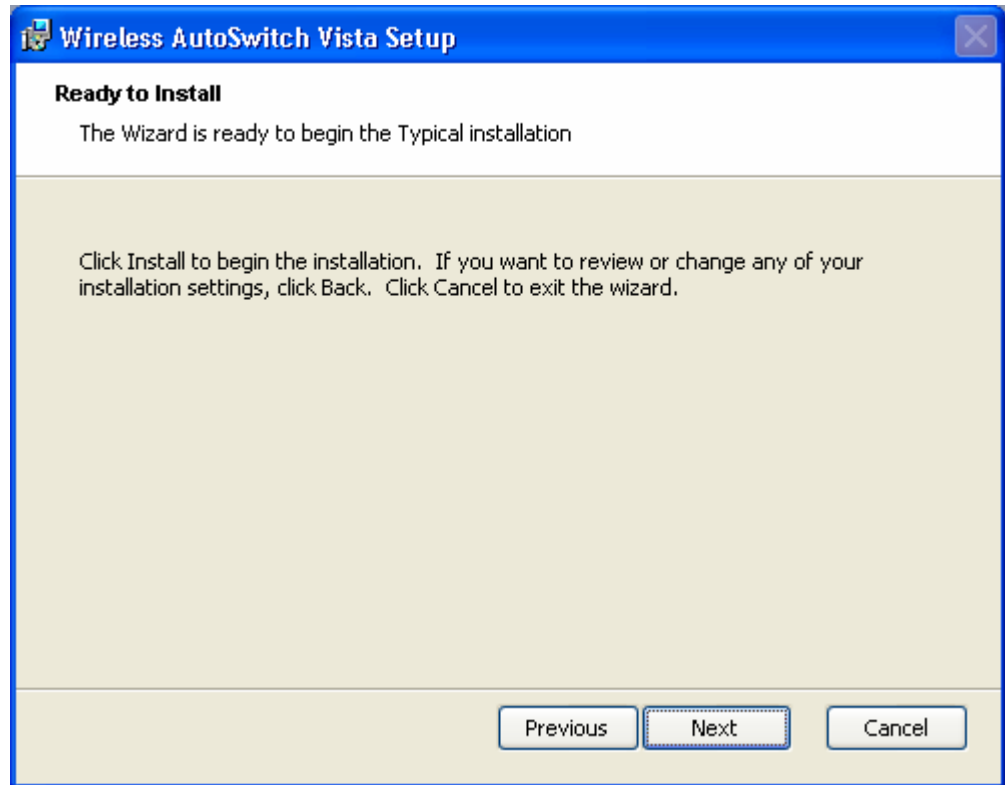
License Information
Please enter your license key

License Key: E063E-B10AD-842C3-189A0-60400-00614E00E

Previous Next Cancel

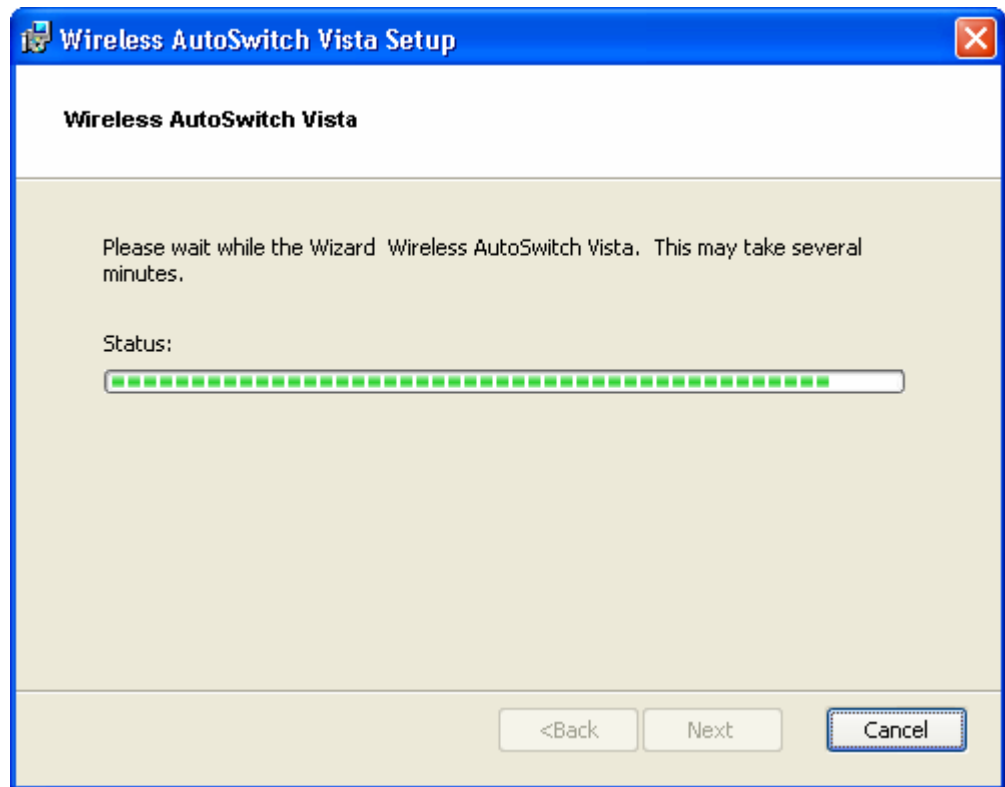
WIRELESS AUTOSWITCH INSTALLATION

You will see the Ready to Install dialog. Click **Next**.



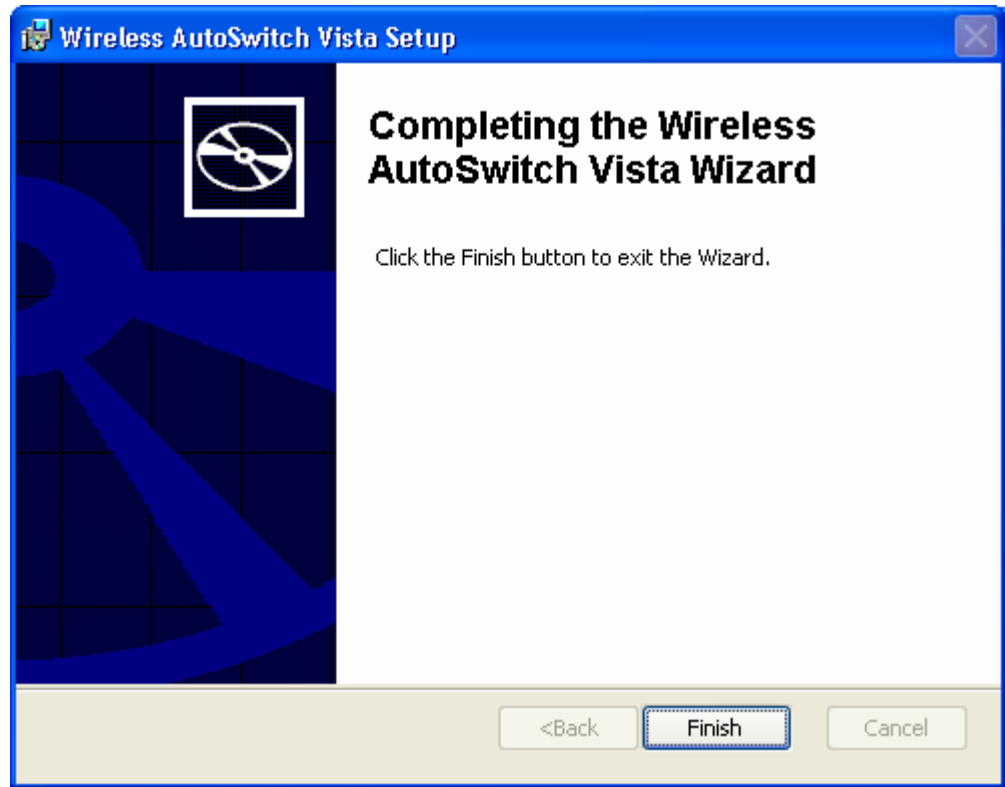
WIRELESS AUTOSWITCH INSTALLATION

Wireless AutoSwitch will now install.



WIRELESS AUTOSWITCH INSTALLATION

Now you will see the Installation Complete dialog. Click **Finish**.



That is all you need to do for a basic installation. The application is installed and started immediately.

Basic Usage

Once Wireless AutoSwitch is installed it will work automatically without any need for user interaction. Test it for yourself:

Action to Perform	Result You will Observe
Disconnect your wired connection	The wireless card will be enabled
Reconnect your wired connection	The wireless card is disabled

Different Modes of Operation

Wireless AutoSwitch has 2 different modes. Each mode does something a little different. The default installation mode is Mode 1.

Mode 1:

- Starts when windows start.
- User can manually enable the wireless card and Wireless AutoSwitch will not automatically turn it off.

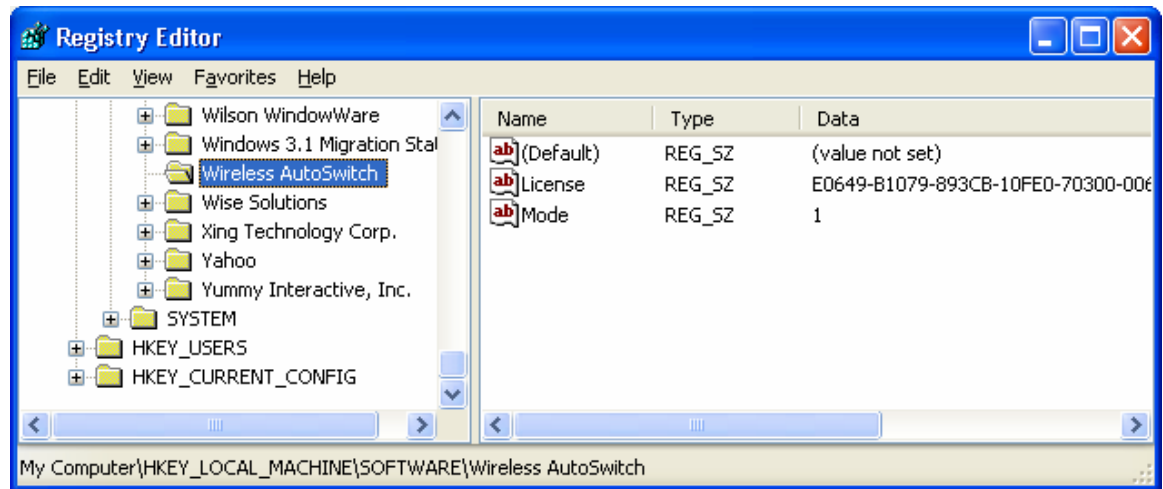
Mode 2:

- Starts when windows start.
- If the user manually enables the wireless card Wireless AutoSwitch will automatically turn it off.

Changing Modes and License Key

The mode can only be changed through the registry. Open regedit and navigate to HKEY_LOCAL_MACHINE\SOFTWARE\Wireless AutoSwitch, double click on Mode and enter 1-4.

You can also change the license key here by double clicking on “License Key” and entering the different license key.



Advanced Installation

For deployment of Wireless AutoSwitch across multiple machines you have a few options.

1. You could do a silent MSI Installation through a batch file, login script, SMS or any other deployment tool using a command similar to:

```
msiexec /i "Wireless AutoSwitch.msi" MODE=1 LICENSEKEY=1111-1111-1111-1111 /q
```

You would specify the filename, mode and license key in the command line.

2. You could create a transform file (MST) that would silently deploy Wireless AutoSwitch with the mode and license key. You can use this option for deployment through group policy.
3. If needed Sase Sham, Inc. could provide you a single MSI file that has no dialogs and is hard coded with the mode and your permanent license key.

What it Does

Wireless AutoSwitch is installed and runs as a service that is set to automatically start. If the user stops the Wireless AutoSwitch program, it will restart automatically on reboot.

The first thing it does is identify the wireless card and then finds out if it is enabled or disabled. Then it checks if there is a hard-wire connection active. If there is an active wired connection the wireless card is disabled if it isn't already disabled.

At this point Wireless AutoSwitch is in a loop looking at the wired connection every 3 seconds.

Because the program is in a loop only looking at the wired connection you can manually enable the wireless card and it will not get automatically disabled by Wireless AutoSwitch (Only in Mode 1 and 3). This is useful if you temporarily want both wired and wireless enabled.

The moment the wired connect is disconnected, the wireless card is enabled and Windows takes over and makes a wireless connection if one is available and setup for automatic connection.

Wireless AutoSwitch will only enable or disable the wireless network card depending on the situation and nothing else. It does not establish the wired or wireless connections, Windows does that.

Known Issues

This version only works with Windows Vista. There is a separate version for Windows XP.

If you have more than one wireless card it may lock onto the wrong one.

You have to use Windows XP's wireless zero configuration (XP's built in wireless network connection program) to manage the card. If for instance you have a Linksys wireless card and are using the Linksys utility to manage wireless connections the card may not get disabled by Wireless AutoSwitch.

If there is a WMI issue on the machine where WMI cannot communicate with the network card Wireless AutoSwitch will not work. Wireless AutoSwitch uses WMI to identify which network card is the wireless one, if it can't identify a wireless card it quits.

Different Versions

There are two other versions of Wireless AutoSwitch:

1. Wireless AutoSwitch - Works on Windows XP
2. Wireless AutoSwitch Multi - Works with multiple wireless cards

Support

Support is available through phone and/or email. Please don't hesitate to contact us with any questions or issues.

Phone: 718-930-1990

Email: sase@saseshaminc.com